

# Changes in Human Population Structure and Implications for Biodiversity Conservation

Jianguo Liu  
*Department of Fisheries and Wildlife*  
*Michigan State University*  
USA

Zhiyun Ouyang  
*Department of Systems Ecology*  
*Research Center for Eco-Environmental Sciences*  
*Chinese Academy of Sciences*  
Beijing, China

Yingchun Tan  
Jian Yang  
Heming Zhang  
*Wolong Giant Panda Research Center*  
Sichuan, China

**Occasional Paper No. 2**  
**Program on Population and Sustainable Development**  
**(PSD)**  
**American Association for the Advancement of Science**  
**(AAAS)**

**Spring 2000**

This paper was reprinted with permission from *Population and Environment*, Volume 21 Number 1, September 1999. Figure 1 was reprinted with permission from *Conservation Biology*, Volume 13 Issue 6, December 1999.

### ***Acknowledgments***

This Occasional Paper is the second in a series published by the Program on Population and Sustainable Development (PSD) of the American Association for the Advancement of Science (AAAS). The research project on which this Paper is based was supported in part by the PSD International Research Cooperation Project (IRCP). AAAS is grateful to The John D. and Catherine T. MacArthur Foundation, The William and Flora Hewlett Foundation, and the Turner Foundation for their generous support of this project.

The authors would like to thank Cathy Chung, Daniel Rutledge, and Jialong Xie for their assistance. We are very grateful to Kevin MacDonald for his comments that improved the paper significantly. Funding for this project is provided by the National Science Foundation (CAREER Award), AAAS, Michigan State University (All-University Research Initiation Grant, Global Competence Fund, Institute for International Agriculture), the National Natural Science Foundation of China, the Chinese Academy of Sciences, and China Bridges International (North America). The authors would also like to thank Lars Bromley, Project Coordinator for AAAS-PSD, and Victoria Dompka Markham, Director of the AAAS-PSD, for editing and reprinting this paper.

### ***About AAAS***

AAAS is the world's largest federation of scientists and engineers, with nearly 300 affiliate organizations and more than 140,000 scientists, engineers, science educators, policy makers, journalists, and interested citizens worldwide. AAAS publishes *Science*, one of the most prestigious and frequently cited scientific journals. The Association also undertakes program activities to expand international scientific cooperation on global issues, advance science education, and shape policy issues grounded in science and technology. Through the Program on Population and Sustainable Development, AAAS applies scientifically-based, multi-disciplinary, policy and field-driven analysis to the relationships between population, the environment, and consumption, and the vital, interrelated roles they play in building and strengthening sustainable societies worldwide. The opinions in this paper are those of the authors and do not necessarily reflect the opinions of AAAS.

Additional copies of this paper are available from:

© 2000 American Association for the Advancement of Science (AAAS)  
International Directorate  
Program on Population and Sustainable Development (PSD)  
1200 New York Avenue, NW  
Washington, DC, 20005, USA  
Telephone: USA + 202-326-6495  
Fax: USA + 202-289-4958  
Email: [lbromley@aaas.org](mailto:lbromley@aaas.org)  
Internet: <http://www.aaas.org/international/psd/psd.html>

## Table of Contents

Introduction .....	6
Methods .....	7
Results .....	10
Discussion and Conclusions .....	12
References .....	15

## Table of Figures

<b>Figure 1a:</b> Potential Panda Habitat in Wolong Nature Reserve .....	8
<b>Figure 1b:</b> Realized Panda Habitat in Wolong Nature Reserve .....	9
<b>Figure 2:</b> Location of the Wolong Nature Reserve .....	10
<b>Figure 3:</b> Age and Sex Structures at the Wolong Nature Reserve in 1982 (A) and 1996 (B).....	11
<b>Figure 4:</b> Percent Changes in Human Population at Different Age Groups Between 1982 and 1996 .....	11
<b>Figure 5:</b> Levels of Education that Local Residents Received in 1982 (A) and in 1996 (B) .....	13



## **Introduction**

Human impacts on the environment and biodiversity have been recognized for a long time (Ehrlich & Holdren, 1971; Ehrlich, 1988; Wilson, 1988; Lubchenco et al., 1991; Vitousek et al., 1997). Previous studies on population-environment and population-biodiversity interactions often used human population size, density, or growth rates as independent variables in descriptive or correlational analyses (e.g., Holdren & Ehrlich, 1974; Norman, 1994; Lutz, 1996; Waak, 1996; Cheever, 1997; Thompson & Jones, 1999). Although demographers have done extensive research on temporal changes in population structure (e.g., sex ratio and age composition), we have not found any studies that linked population structural changes and their possible impacts on biodiversity. Efforts are urgently needed to explore such an uncharted field, because identifying the linkages between changes in human population structure and biodiversity could be helpful (1) to understand the underlying mechanisms behind the human impacts, and (2) to develop effective socioeconomic policies for biodiversity conservation.

A conventional approach to preserve biodiversity has been to establish “protected areas” (e.g., nature reserves and national parks). The major purpose of protected areas is to avoid or minimize human impacts on biodiversity, but in reality, human encroachments are very common in a large number of protected areas around the world (Dompka, 1996). As a result of extensive human activities, biodiversity in protected areas continues to decline. Here, we list just a few examples. In India’s Periyar Tiger Reserve, Great Himalayan National Park, and Gir National Park, there are a variety of

population pressures arising from migration, herb collection, cattle and sheep grazing, and tourism (Singh, 1996). Maldonado (1996) reported that biodiversity in the Sierra Nevada de Santa Marta Biosphere Reserve of Colombia has suffered from migration, increased tourism, drug-related violence, and conflicts among indigenous groups. The unique biodiversity of the Lake Nakuru National Park in Kenya is threatened by extensive waste and land erosion due to the rapidly growing local population and tourists (Thampy, 1996). Increased tourism, a growing demand for fish products, and introduced animal and plant species had tremendous impacts on the marine biodiversity of the Galapagos Islands National Park of Ecuador (MacFarland & Cifuentes, 1996). Despite the extensive protection efforts for the Everglades National Park of the United States, rapid human population growth and economic development in South Florida has reduced the population of wading birds nesting in the Everglades by more than 90 percent (Bancroft, 1989; Ogden, 1994). Furthermore, 51 animal species and 54 plant species have been listed or designated as candidates for listing under the U.S. federal Endangered Species Act (Bancroft, 1996).

In this study, we make the first attempt to analyze population structural changes and discuss the implications of these changes for biodiversity conservation in protected areas, using Wolong Nature Reserve (southwestern China) as an example. Like many other protected areas in China and other countries, local residents in Wolong depend on the forest and land inside the reserve for energy and food. Wolong is the first reserve designated for conserving the well-known endangered giant pandas and other endangered/

threatened species (Schaller et al., 1985). However, annual fuelwood consumption in this reserve continued to increase from approximately 4,000 cubic meters to 10,000 cubic meters during the past two decades (Liu et al., 1999). Under human influences (e.g., fuelwood collection, timber harvest, agriculture), the panda habitat has been reduced by more than 20,000 hectares (see Figures 1a and 1b). Furthermore, much of the remaining habitat has become highly fragmented and degraded in quality (Liu et al., 1999). Although it is known that the human population size in Wolong increased by about 15 percent in the past 15 years (Liu et al., 1999), it is not clear whether the human population structure changed. Therefore, in this paper we hope to answer two major questions: Did the human population structure (sex ratio, age composition, and level of education received) in Wolong change during the last 15 years? If so, what are the implications of these changes for the giant panda habitat?

## **Methods**

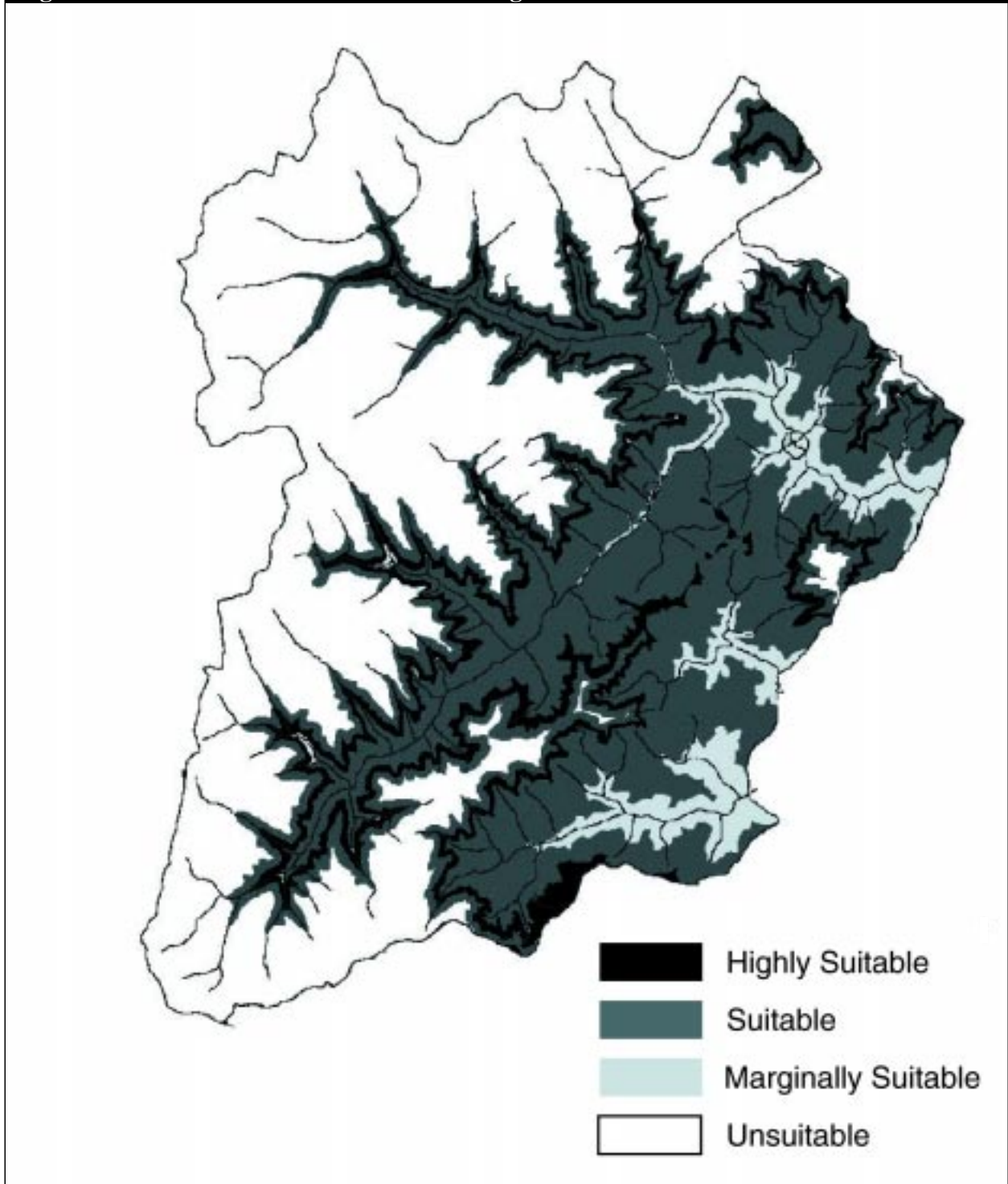
Most of the approximately 1,000 giant pandas in the wild inhabit the designated nature reserves (Giant Panda Expedition, 1974; China's Ministry of Forestry & WWF, 1989). Our study site, Wolong Nature Reserve, is the largest among the 25 nature reserves for giant panda conservation (MacKinnon & De Wulf, 1994; Wang, 1997). This reserve was established in 1962 with an area of 20,000 hectares, and expanded to its current size of 200,000 hectares in 1975 (He et al., 1996). Approximately 110 giant pandas, representing 10 percent of the total wild population, inhabit the Wolong reserve (Giant Panda

Expedition, 1974; China's Ministry of Forestry & WWF, 1989; Zhang et al., 1997).

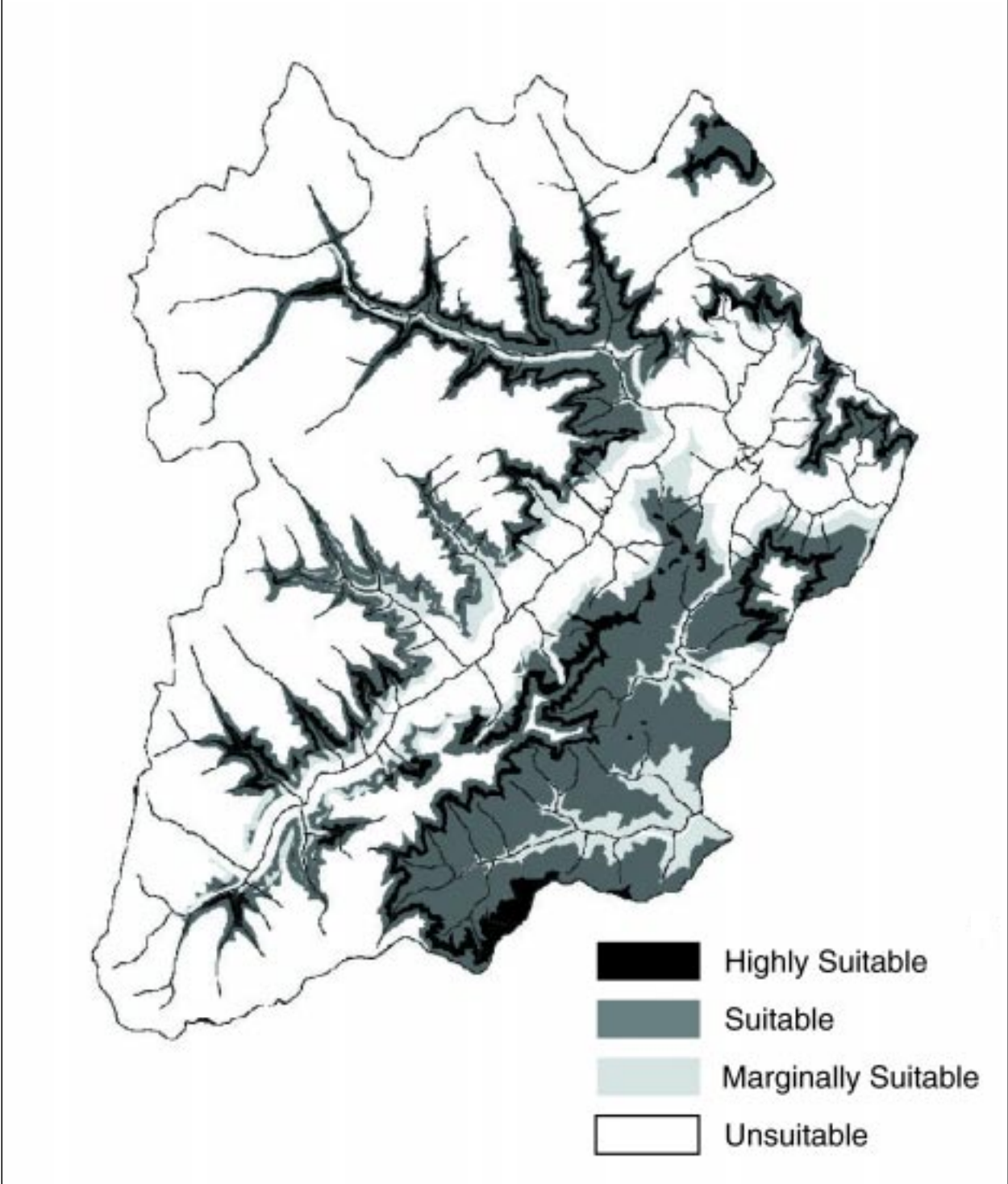
Wolong Nature Reserve is located in Wenchuan County, Sichuan Province, Southwestern China (102°52' - 103°24' East, 30°45' - 31°25' North) (Figure 2). It is situated between the Sichuan Basin and the Qinghai-Tibet Plateau, and is characterized by high mountains and deep valleys, with elevations ranging from 1,200 to 6,525 meters. It encompasses several climatic zones and has high habitat diversity (Schaller et al., 1985), with more than 2,200 animal and insect species and nearly 4,000 plant species (Tan et al., 1995). In addition to the giant pandas, 12 other animal species and 47 plant species in the reserve also appear on China's national protection list.

The reserve is part of the international Man and Biosphere Reserve Network (He et al., 1996) and is managed by the Wolong Administration Bureau. The Bureau reports to both China's Ministry of Forestry and the Sichuan Province government. In Wolong, there are more than 4,000 local residents, belonging to three minority ethnic groups and the Han majority ethnic group. Although the Han ethnic group accounts for the vast majority of the population in China, the three minority ethnic groups comprised approximately 70 percent of the total population in the reserve in 1996 (Tibetan — 66.46 percent, Chang — 3.03 percent, and Hui — 0.21 percent) (Wolong Nature Reserve, 1996). Between 1982 and 1996, the human population in the reserve increased from 3,782 to 4,336 (an increase of 14.65 percent) (Wenchuan County, 1983; Wolong Nature Reserve, 1996). The current birth rate is about 2.5 children per woman (Liu et al., 1999). This relatively high birth rate (for China)

**Figure 1a: Potential Panda Habitat in Wolong Nature Reserve**



**Figure 1b: Realized Panda Habitat in Wolong Nature Reserve**



**Figure 2: Location of the Wolong Nature Reserve, China**



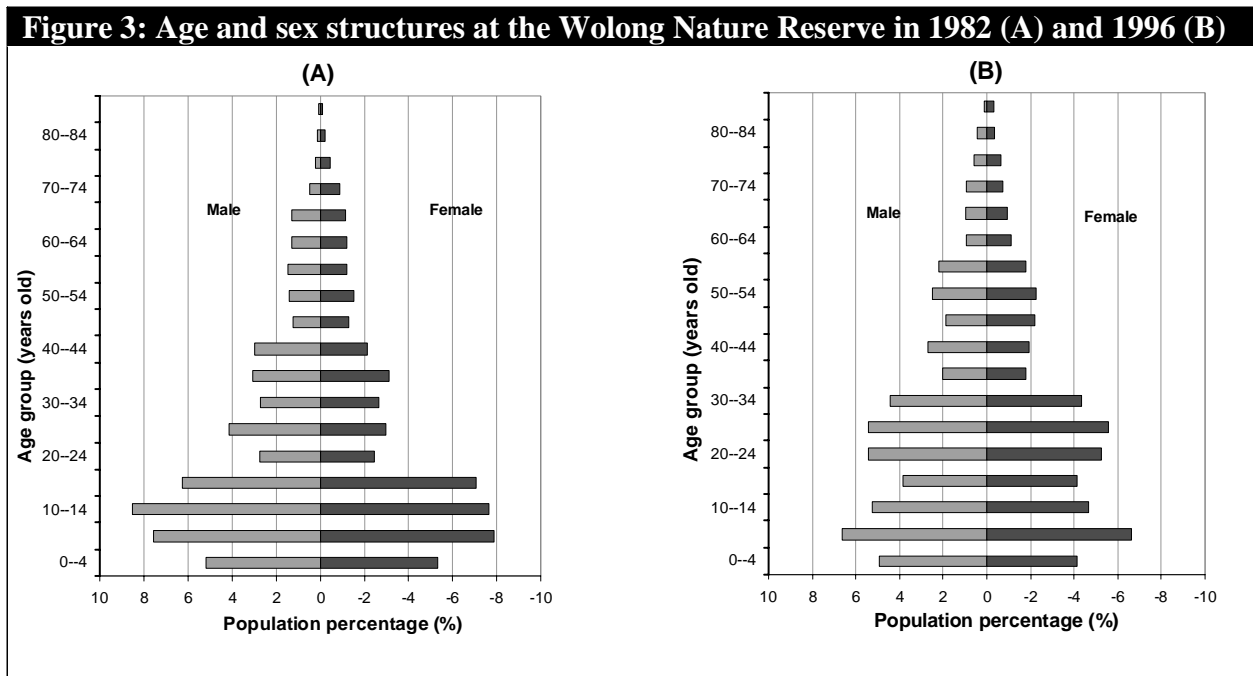
is due to the fact that minority ethnic groups are exempt from China's well-known policy of "one-child per couple," because of the Chinese government's political consideration. The vast majority of the local residents are farmers, but there are diverse economic activities in the reserve, including agriculture (maize and vegetables are the major crops), fuelwood collection, timber harvesting, house building, transportation, collection of traditional herbal medicines, and tourism. Other types of employment include road construction and maintenance, and construction of small hydropower stations over the two main rivers in the reserve.

Data regarding the human population structure in the Wolong Nature Reserve were obtained from

the 1982 population census (Wenchuan County, 1983) and the 1996 farmer household survey (Wolong Nature Reserve, 1996).

## Results

**Age composition.** The pyramid base (age groups with greater than 8 percent of the total population) in 1996 was higher but narrower than that found in 1982 (Figure 3). It consisted of seven age groups (0-34 years old) in 1996 and only four age groups (0-19 years old) in 1982. On average, each age group at the pyramid base accounted for 13.85 percent and 10.09 percent of the total population in 1982 and 1996, respectively.



The number of children (0-19 years old) was reduced 16.90 percent from 1982 to 1996 (Figure 4), whereas the number of young adults (20-34 years old) almost doubled (with an increase of 97.61 percent) during the same time period. People in the age groups from 20 to 59 years old (the main labor force) increased by 59.67 percent from 1982 to 1996. The number of old people (60+ years of age) increased by 24.47 percent.

**Sex ratio.** There were two notable changes in the sex ratio (Figure 3 and Table 1). First, the sex ratio of young children (0-4 years of age) changed

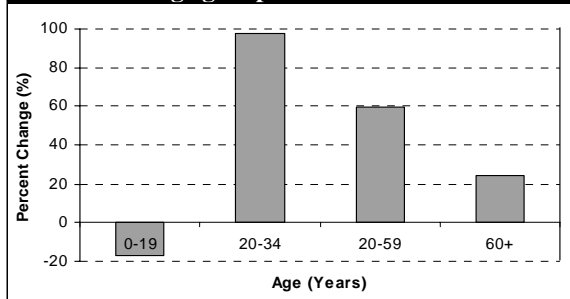
from 0.98:1 in 1982 to 1.20:1 in 1996. In number terms, there were 5 fewer young male children (196) than young female children (201) in 1982. However, there were 35 more young male children (213) than young female children (178) in 1996.

**Table 1: Changes in Sex Ratio (males: females) at Wolong Nature Reserve**

Age Group	Year	
	1982	1996
0-4	0.98:1	1.20:1
5-69	1.06:1	1.04:1
70+	0.57:1	0.98:1

Second, the sex ratio of the oldest people (70+ years of age) was 0.57:1 in 1982, but increased to 0.98:1 in 1996. In number terms, there were 26 more females (61) than males (35) in 1982, but the numbers of males (89) and females (90) were almost the same in 1996. This means that more males lived longer in 1996 than in 1982. In other age groups (5-69 years of age), the average sex ratio remained basically unchanged in 1982 (1.06:1) and 1996 (1.04:1).

**Figure 4. Percent changes in human population at different age groups between 1982 and 1996**



**Education.** From 1982 to 1996, illiteracy dropped from 30.85 percent to 24.60 percent, and the percentage of people who attended only elementary school was reduced from 55.10 percent to 47.94 percent (Figure 5). Percentages of people who received middle school, high school, and college education increased from 14.01, 0.00, and 0.03 percent in 1982 to 22.73, 4.21, and 0.53 percent in 1996, respectively (Figure 5). Overall, the percentage of people who received an education beyond the elementary school level doubled from 1982 (14.04 percent) to 1996 (27.47 percent).

## **Discussion and Conclusions**

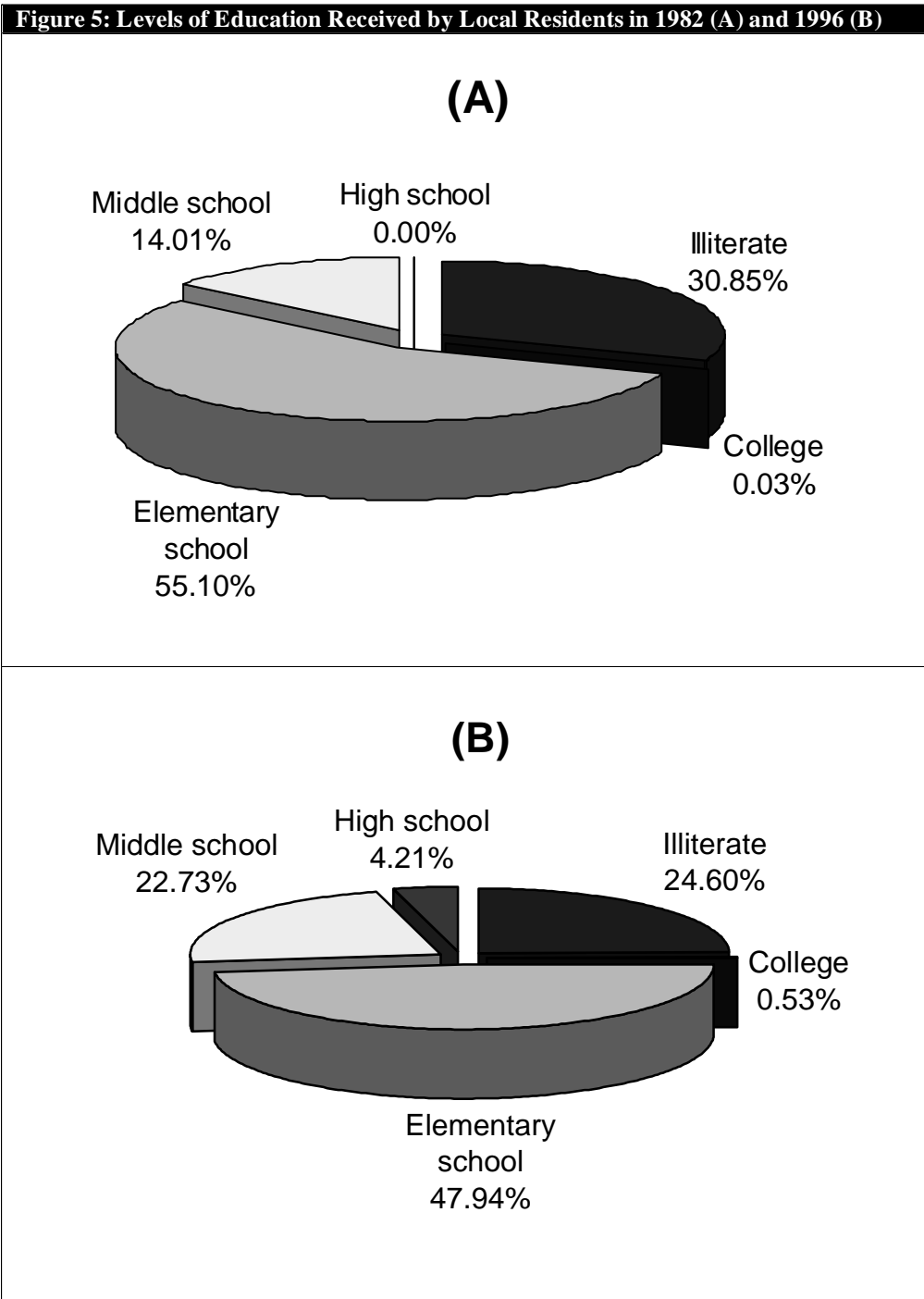
Although the total population increased by only 14.65 percent from 1982 to 1996, the labor force (those 20-59 years of age) jumped by 59.76 percent (Figure 4). In other words, the rate of change in the labor force was three times higher than the rate of change in the total population. This sharp increase in the labor force is exceptionally significant with regard to human impacts on the panda habitat because it is the labor force that does most of the damage to the panda habitat through activities such as harvesting timber trees, collecting fuelwood, and constructing roads.

The male-biased youngest age group has two important implications for future population dynamics and the panda habitat. First, the extra boys inside the reserve would have to find girls from outside the reserve to marry. Marrying girls from outside the reserve will further increase both the population size and the labor force inside the reserve. Second, men are more influential than women in terms of the amount and extent of the impacts on the giant panda habitat, because men

typically perform heavier jobs (e.g., cutting fuelwood, harvesting timber trees, constructing roads) than women. This is in contrast to some other parts of the world in which mainly women are responsible for collecting fuelwood (e.g., Cruz, 1996) and managing natural resources (Waak, 1996).

Many of the previous efforts regarding conservation education focused on enhancing public awareness and participation. However, it is unclear what school education can do for conservation. For example, are people with higher levels of school education more willing to move out of the reserve to conserve the panda habitat? To answer this question, we did a survey regarding local residents' attitudes toward relocation (Liu et al., 1999). We found that most of the young people were willing to settle outside of the reserve before they got married, especially if they could receive a higher education or more job opportunities in the cities. Although older people preferred not to move out, they often supported and encouraged their children and grandchildren to obtain a college education and then work outside the reserve. These findings suggest that a higher level of school education could help young people move out of the reserve, and thus reduce the future human impacts on the panda habitat. It is encouraging that the education levels in the reserve have improved over the last 15 years (Figure 5), but the percentage of people who had a higher education is still incredibly low.

In the past, the Chinese government and some international organizations tried to relocate local residents using a household approach, which attempted to relocate the local people household by household – both young and old. However, this



is very difficult to do, because older people are accustomed to their local life and usually do not want to relocate. For example, in the early 1980s, to encourage local residents to move away from the core zones of the giant panda habitat, the World Food Program and the Chinese government built a large apartment complex in an area within the reserve that was unsuitable for giant pandas. However, not a single household moved to the complex.

Liu et al.'s (1999) simulation results show that moving young people out of the reserve would be more feasible and effective than the household approach. First, young people are more willing to relocate. Since they possess more technical skills, they do not need to depend on the land and can find professional jobs relatively easily. Second, moving one young person out of the reserve is equivalent to relocating a number of people over time, because the young person will not have children and grandchildren living inside the reserve. A key for stimulating more young people to relocate is to provide them with quality education in elementary, middle, and high schools. Enhancing education from the elementary to the high school levels will better prepare young people to compete for college education in the cities, and consequently reduce the total population and labor force in the reserve. Of course, we cannot expect that 100 percent of the young people will go to college. In our computer simulations (Liu et al. 1999), even if only 22 percent of the young people relocated (through attending college, marriage, and other job opportunities), the human population size in the reserve would be reduced from 4,300 at present to about 700 in the year 2,047, and the giant panda

habitat would recover and then increase by 7 percent. Under the status quo, however, the human population size in the reserve would increase to approximately 6,000 and the giant panda habitat would be further reduced by about 40 percent.

Our study demonstrates that there have been dramatic changes in the human population structure at the Wolong Nature Reserve. In fact, the rates of population structural changes, such as the labor force and the percentage of young people, were much higher than the rate of change in the total population size. These structural changes, especially the significant increase in the size of the labor force, could have a profound impact on the panda habitat in Wolong. Thus, studying population structural changes is essential in order to identify the underlying mechanisms of human impacts on the giant panda habitat and to develop effective socioeconomic policies for conserving giant pandas.

In conclusion, while population structural changes are a common phenomenon (e.g., Shryock & Siegel, 1976) and biodiversity loss is becoming increasingly severe, research on the linkage between population structural changes and biodiversity conservation is currently lacking. It is our hope that the study described in this paper will stimulate other researchers to quantitatively link population structural changes with biodiversity. Insights into the linkages between these changes — especially the size of the labor force — and biodiversity can be helpful to understand and predict the roles and mechanisms of human beings in altering biodiversity around the world.

## References

- Bancroft, G. T. 1989. Status and conservation of wading birds in the Everglades. *American Birds*, 43, 1258-1265.
- Bancroft, G. T. 1996. Case studies: United States. In V. Dompka (Ed.) *Human population, biodiversity and protected areas: Science and policy issues* (pp. 199-216). Washington, DC: American Association for the Advancement of Science.
- Cheever, F. 1997. Human population and the loss of biological diversity: Two aspects of the same problem. *International Journal of Environment and Pollution*, 7, 62-71.
- China's Ministry of Forestry and WWF. 1989. Conservation and management plan for giant pandas and their habitat. Beijing, China. (In Chinese.)
- Cruz, M. C. J. 1996. Management options for biodiversity protection and population. In V. Dompka (Ed.) *Human population, biodiversity and protected areas: Science and policy issues* (pp. 71-90). Washington, DC: American Association for the Advancement of Science.
- Dompka, V. (Ed.). 1996. *Human population, biodiversity and protected areas: Science and policy issues*. Washington, DC: American Association for the Advancement of Science.
- Ehrlich, P. R. 1988. The loss of diversity: Causes and consequences. In E. O. Wilson (Ed.). *Biodiversity* (pp. 21-27). Washington, DC: National Academy Press.
- Ehrlich, P. R., & Holdren, J. P. (1971). Impact of population growth. *Science*, 171, 1212-1216.
- Giant Panda Expedition. 1974. A survey of the giant panda (*Ailuropoda melanoleuca*) in the Wolong Natural Reserve, Pingwu, Northern Szechuan, China. *Acta Zoologica Sinica*, 20, 162-173. (In Chinese.)
- He, N., Liang, C., & Yin, X. 1996. Sustainable community development in Wolong Nature Reserve. *Ecological Economy*, 1, 15-23.
- Holdren, J. P., & Ehrlich, P. R. 1974. Human population and the global environment. *Am. Sci.*, 62, 282-292.
- Liu, J., Ouyang, Z., Taylor, W., Groop, R., Tan, Y.C., & Zhang, H.M. 1999. A framework for evaluating effects of human factors on wildlife habitat: the case of the giant pandas. *Conservation Biology*, 13, 1360 - 1370 .
- Lubchenco, J., Olson, A. M., Brubaker, L. B., Carpenter, S. R., Holland, M. M., Hubbell, S. P., Levin, S. A., MacMahon, J. A., Matson, P. A., Melillo, J. M., Mooney, H. A., Peterson, C. H., Pulliam, H. R., Real, L. A., Regal, P. J., &Risser, P. G. 1991. The Sustainable Biosphere Initiative: an ecological research agenda. *Ecology*, 72, 371-412.
- Lutz, W. 1996. Population and biodiversity: a commentary. In V. Dompka (Ed.) *Human population, biodiversity and protected areas: Science and policy issues* (pp. 229-242). Washington, DC: American Association for the Advancement of Science.
- MacFarland, C., & Cifuentes, M. 1996. Case studies: Ecuador. In V. Dompka (Ed.) *Human population, biodiversity and protected areas: Science and policy issues* (pp. 135-188). Washington, DC: American Association for the Advancement of Science.
- MacKinnon, J., & DeWulf, R. 1994 Designing protected areas for giant pandas in China. In R. I. Miller (Ed.). *Mapping the diversity of nature* (pp. 172-142). Chapman & Hall, London, England.
- Maldonado, J. M. 1996. Case studies: Colombia. In V. Dompka (Ed.) *Human population, biodiversity and protected areas: Science and policy issues* (pp. 217-227). Washington, DC: American Association for the Advancement of Science.

- Meyerson, F. 1998. Population, development and global warming: Averting the tragedy of the climate commons. *Population and Environment*, 19, 443-463.
- Norman, M. 1994. Protected areas — Protected from a greater what. *Biodiversity and Conservation*, 3, 411-418.
- Ogden, J. C. 1994. A comparison of wading bird nesting colony dynamics (1931-1946 and 1974-1989) as an indication of ecosystem conditions in the southern Everglades. In S. M. Davis, & Ogden, J. C. (Eds.). *Everglades: The ecosystems and its restoration* (pp. 533-570). Delray Beach, FL: St. Lucie Press.
- Schaller, G. B. 1994. *The last panda*. Chicago, IL: The University of Chicago Press.
- Schaller, G. B., Hu, J., Pan, W., & Zhu, J. 1985. *The giant pandas of Wolong*. Chicago, IL : The University of Chicago Press.
- Shryock, H. S., & Siegel, J. S. 1976. *The Methods and Materials of Demography*. San Diego: Academic Press.
- Singh, S. 1996. Case studies: India. In V. Dompka (Ed.) *Human population, biodiversity and protected areas: Science and policy issues* (pp. 97-126). Washington, DC: American Association for the Advancement of Science.
- Tan, Y., Ouyang, Z., & Zhang, H. 1995. Spatial characteristics of biodiversity in Wolong Nature Reserve. *China's Biosphere Reserve*, 3, 19-24. (In Chinese.)
- Thampy, R. J. 1996. Case studies: Kenya. In V. Dompka (Ed.) *Human population, biodiversity and protected areas: Science and policy issues* (pp. 127-134). Washington, DC: American Association for the Advancement of Science.
- Thompson, K., & Jones, A. 1999. Human population density and prediction of local plant extinction in Britain. *Conservation Biology*, 13, 185-189.
- Vitousek, P.M., Mooney, H. A., Lubchenco, J., & Melillo, J. M. 1997. Human domination of earth's ecosystems. *Science*, 277, 494-499.
- Waak, P. 1996. Human impacts, biodiversity and protected areas. In V. Dompka (Ed.) *Human population, biodiversity and protected areas: Science and policy issues* (pp. 243-248). Washington, DC: American Association for the Advancement of Science.
- Wang, C. 1997, October 4. Foreign experts praise China's efforts on environmental protection. *People's Daily (Overseas Edition)*. p.1. (In Chinese.)
- Wenchuan County. 1983. *Statistics of population census of 1982*. Sichuan Province, China. (In Chinese.)
- Wilson, E. O. (Ed.). 1988. *Biodiversity*. Washington, DC : National Academy of Science Press.
- Wolong Nature Reserve 1996. *Agricultural survey data*. Wenchuan County, Sichuan Province, China. (In Chinese.)
- Zhang, H., Li, D., Wei, R., Tang, C., & Tu, J. 1997. Advances in conservation and studies on reproductivity of giant pandas in Wolong. *Sichuan Journal of Zoology*, 16, 31-33. (In Chinese.)

