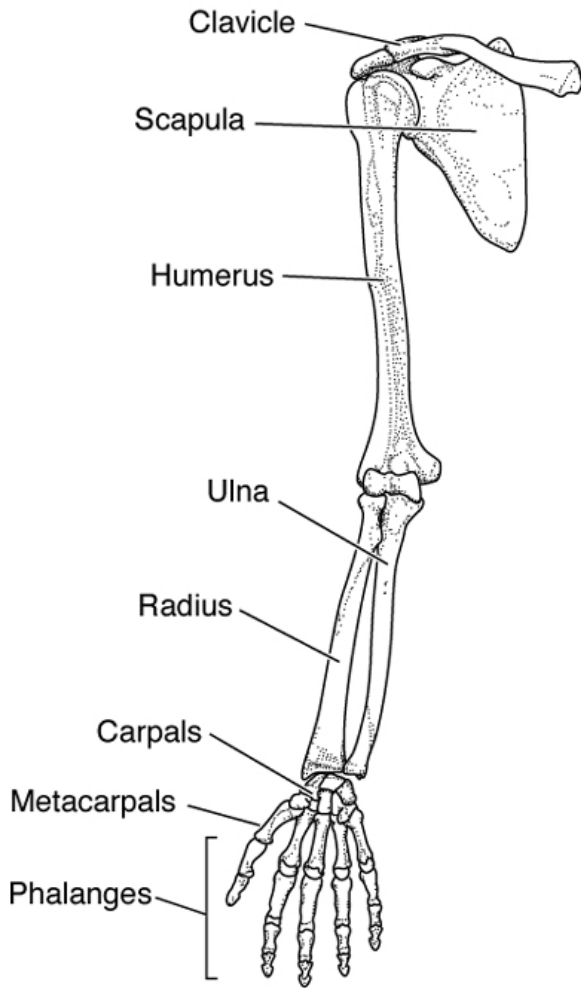


# Evidence for Macroevolution

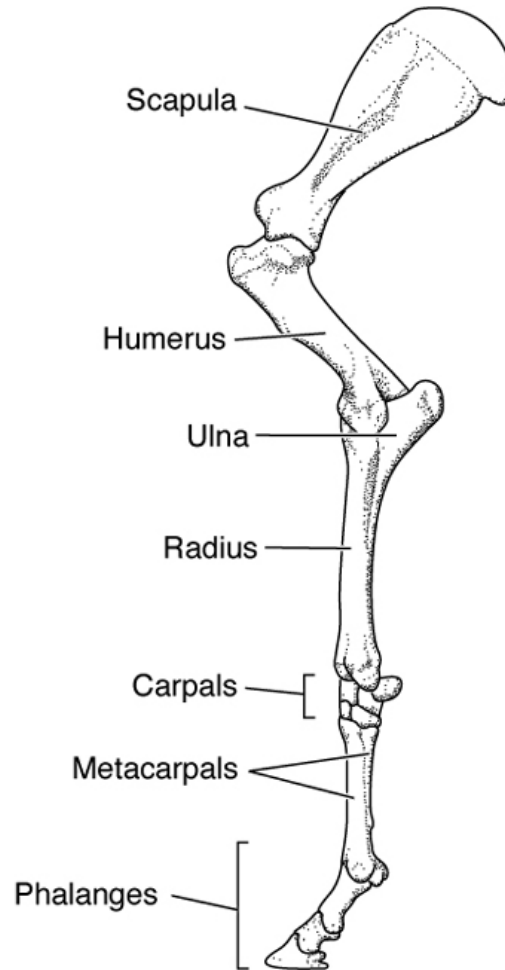
Scott D. Sampson  
University of Utah



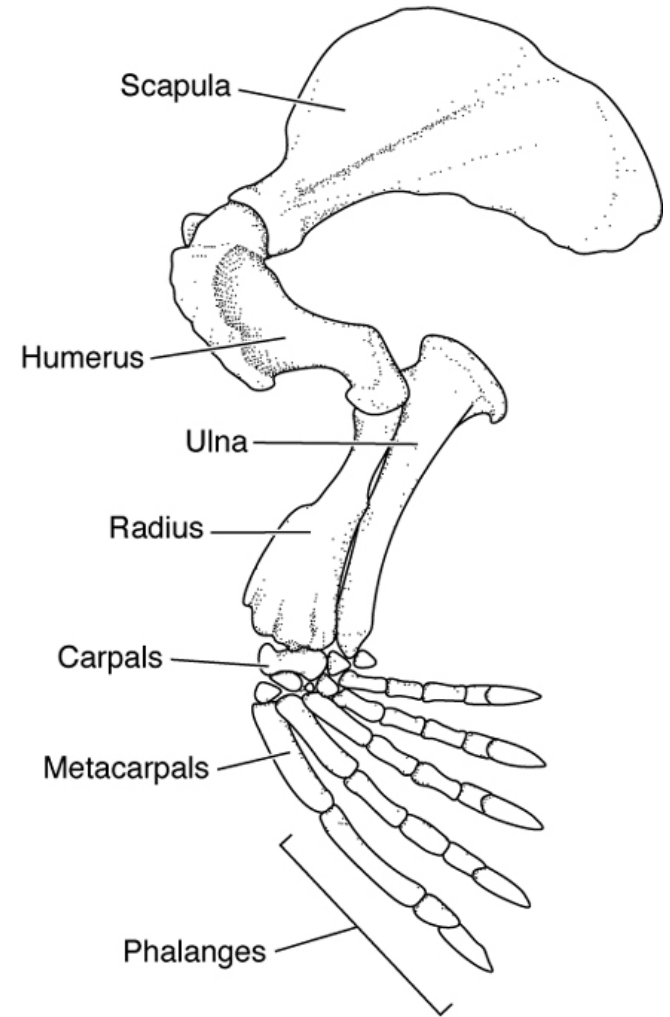
# Bones in Mammalian Forelimbs



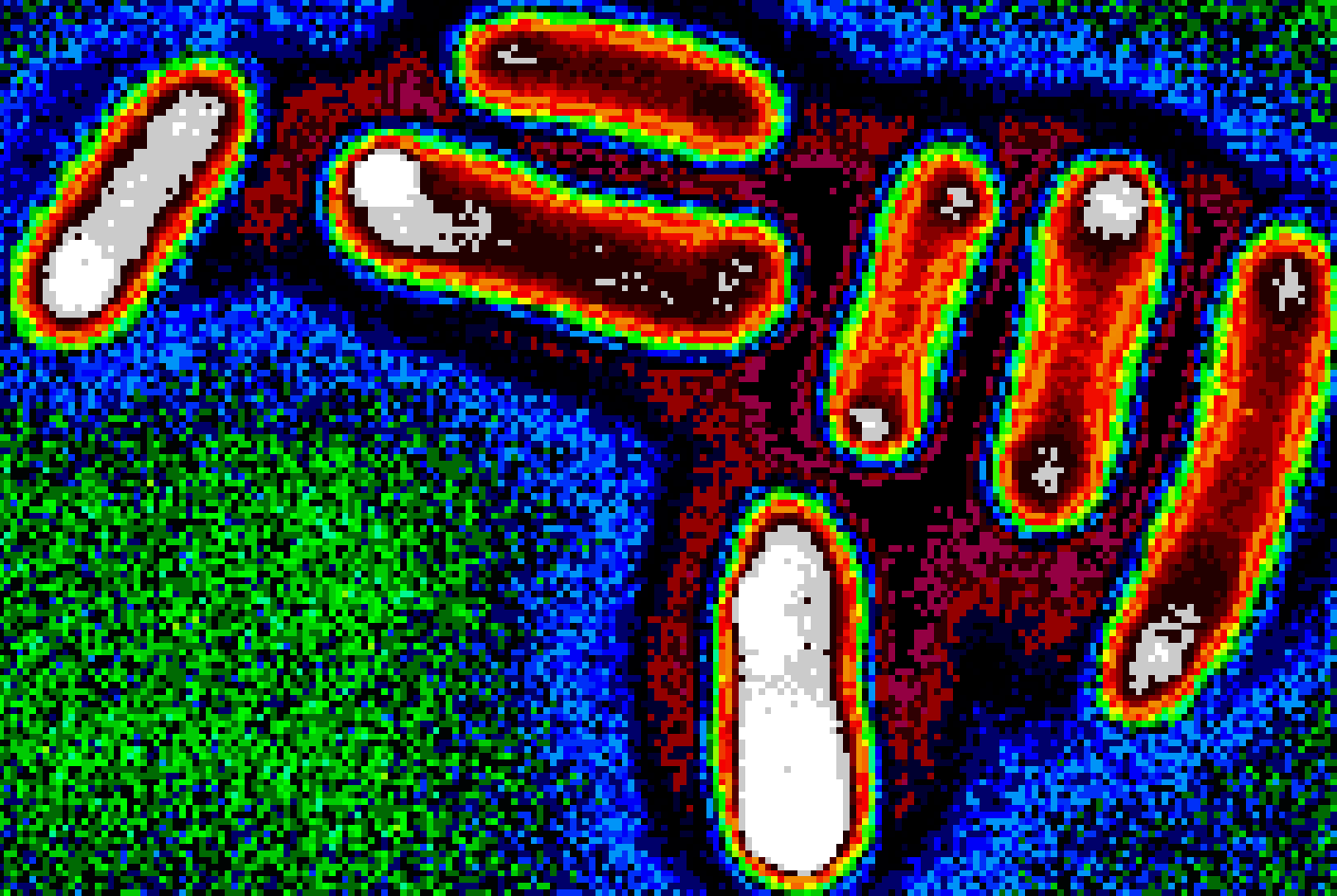
**A.** Human arm

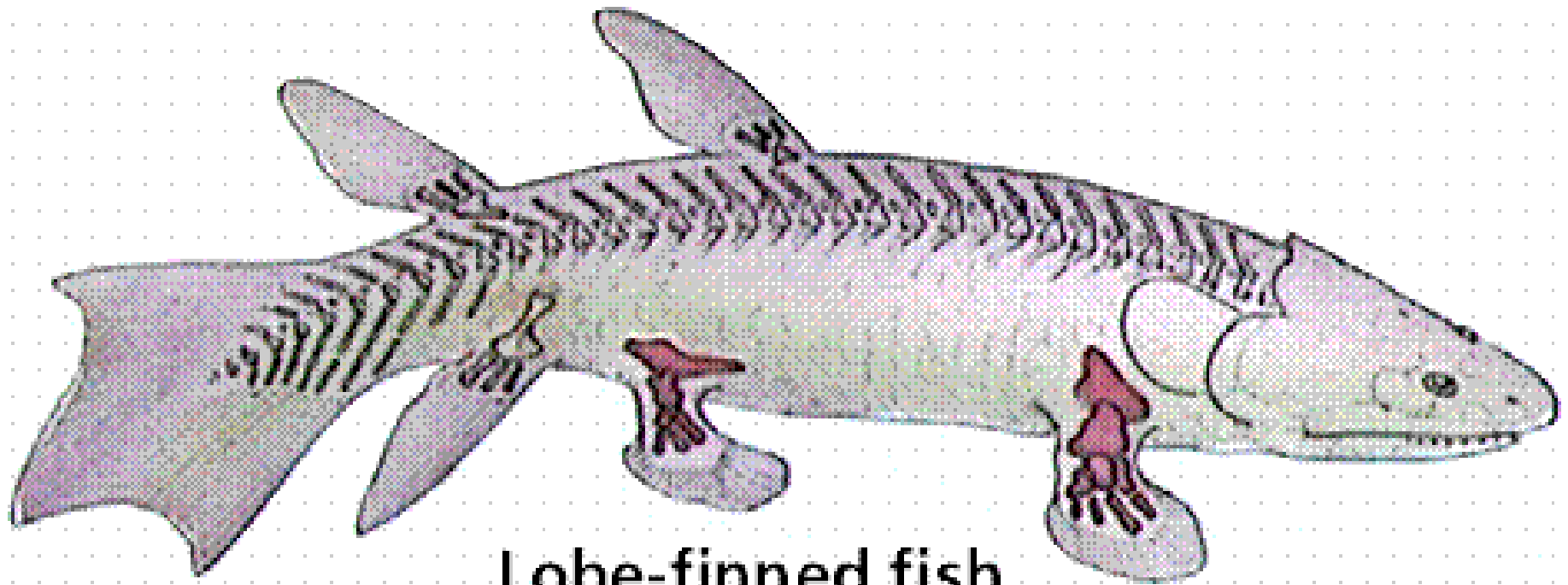


**B.** Horse forelimb

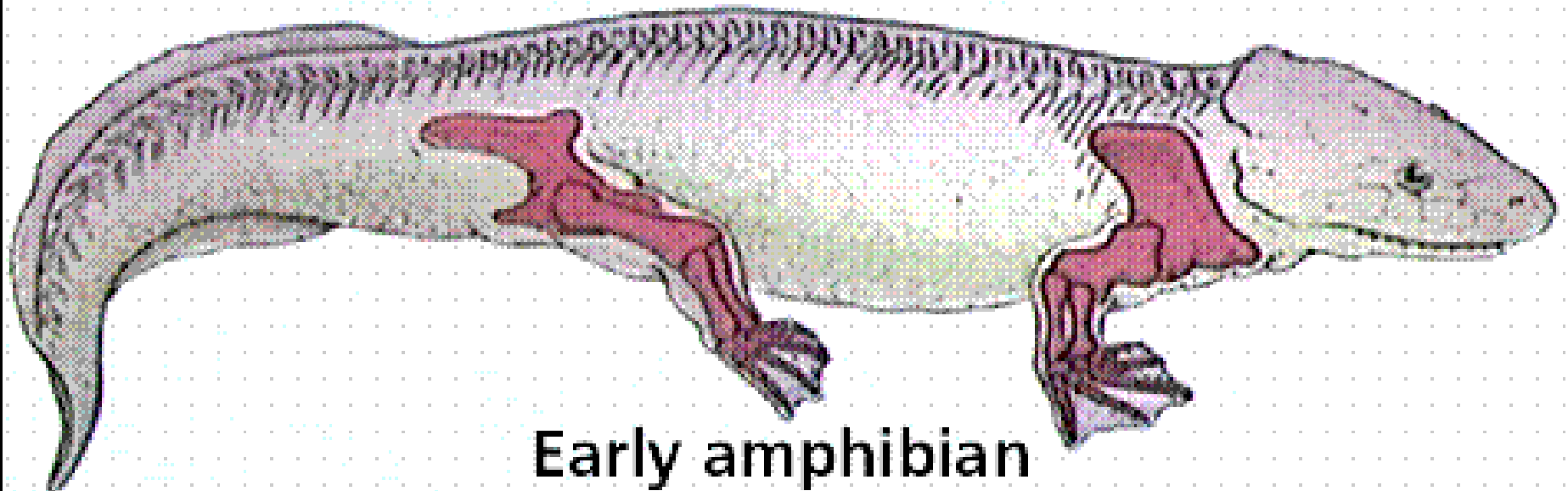


**C.** Seal forelimb

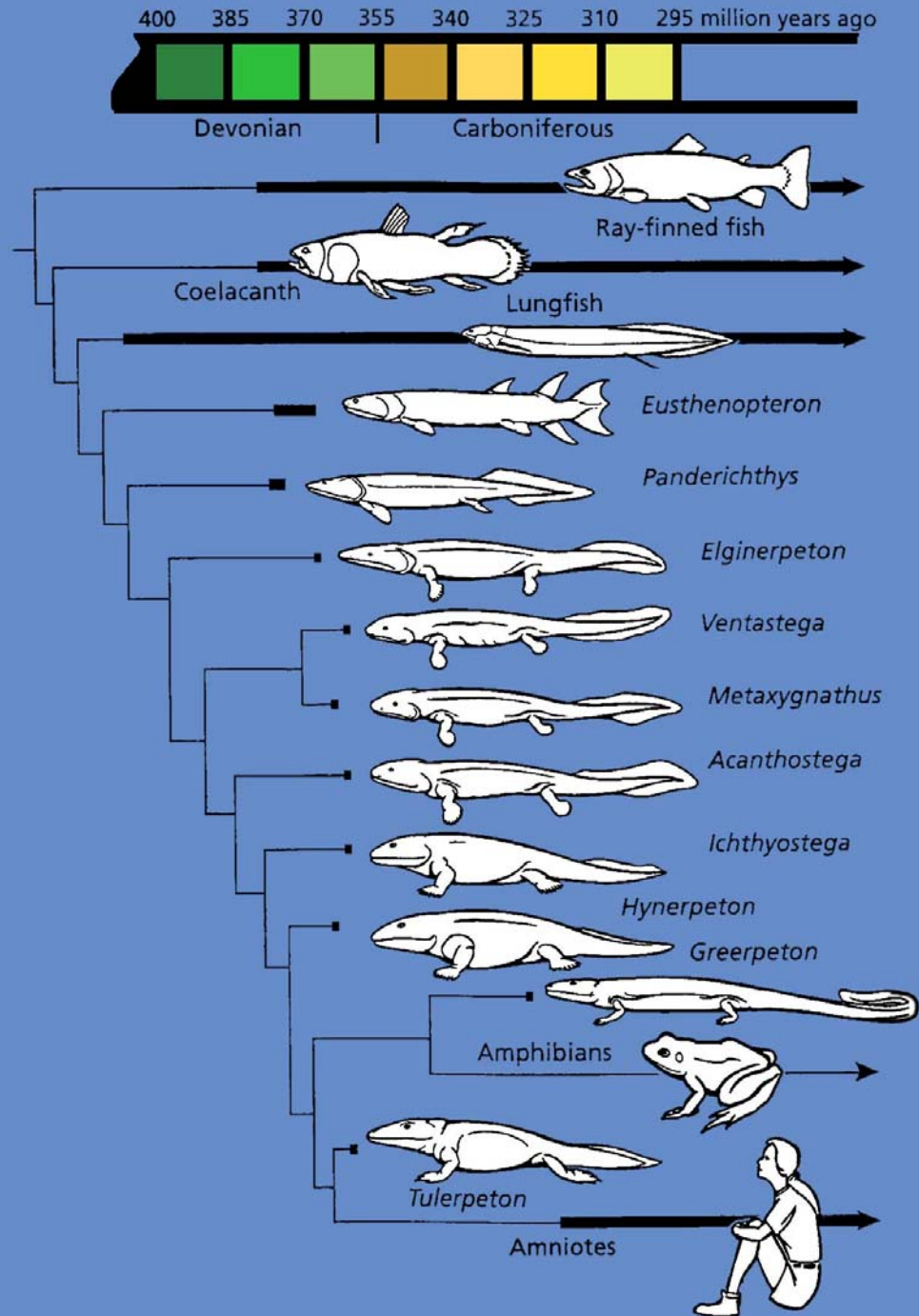




**Lobe-finned fish**

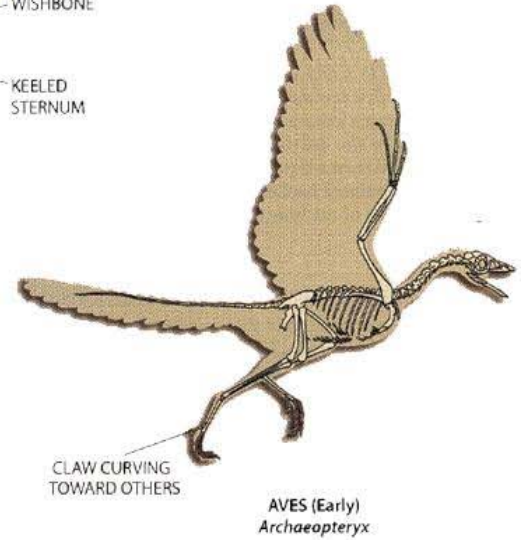
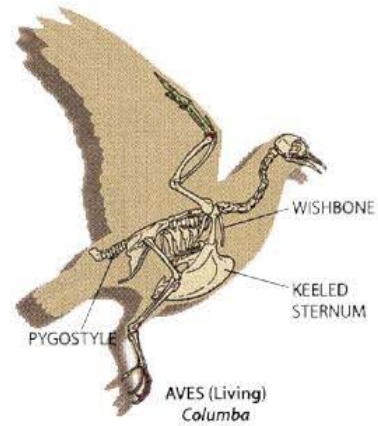


**Early amphibian**

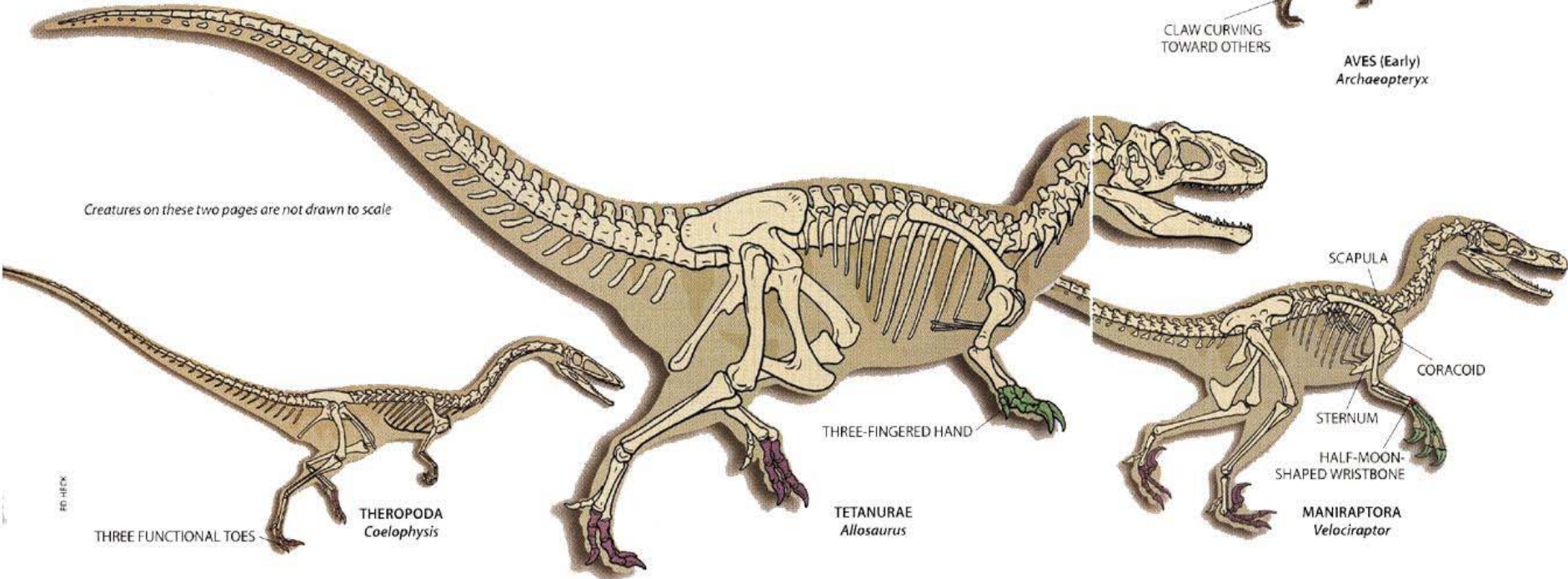


From C. Zimmer, *At the Water's Edge*, 1998

# Dinosaurs to Birds



Creatures on these two pages are not drawn to scale



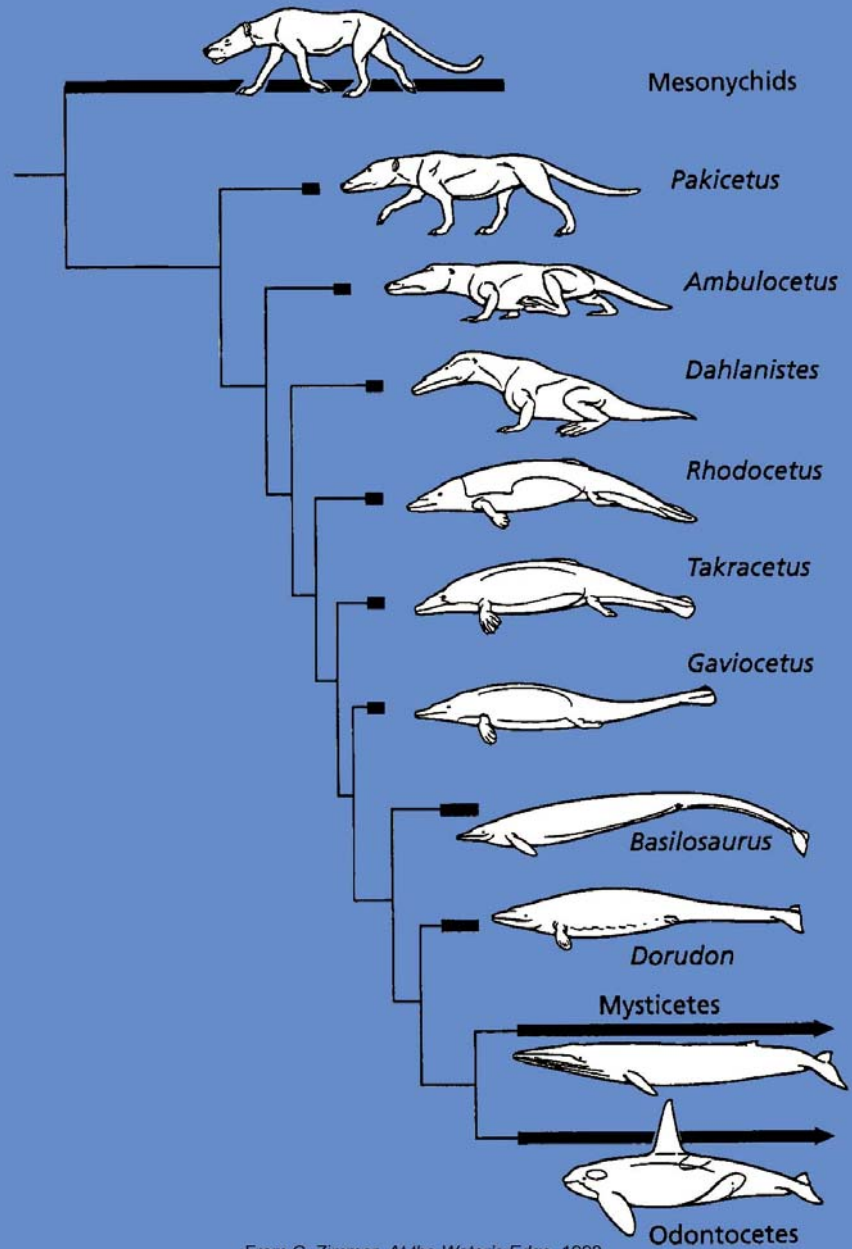
# *Archaeopteryx*: the "Missing Link"



*Sinornithosaurus*







From C. Zimmer, *At the Water's Edge*, 1998



