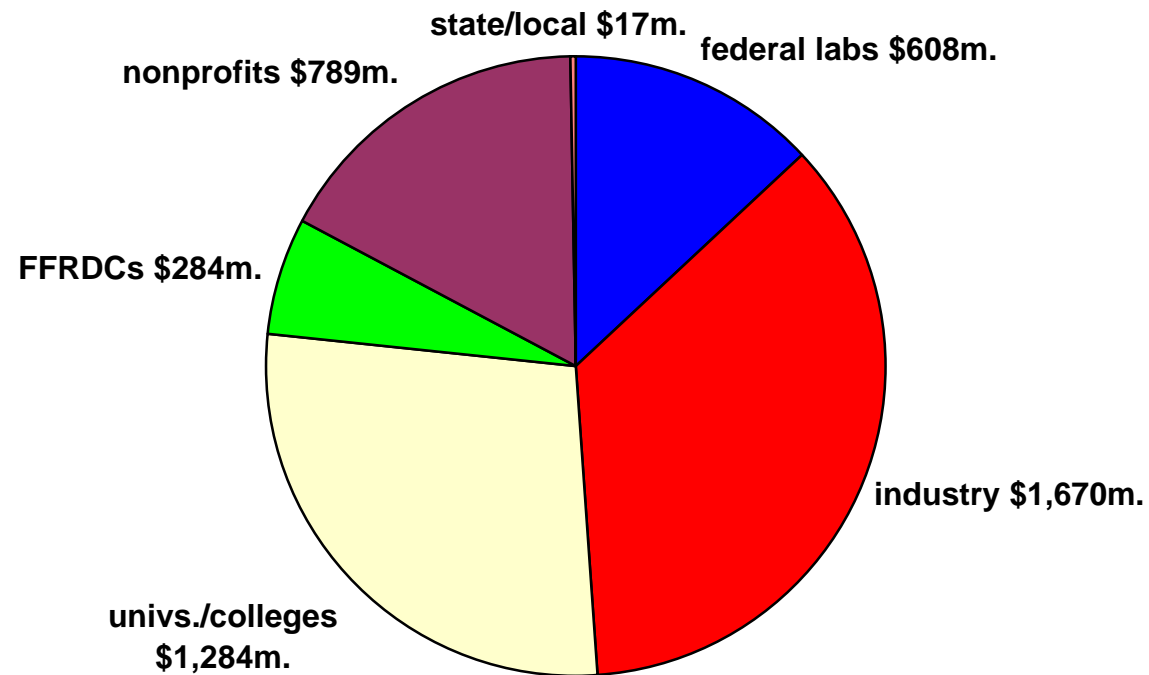


## Federal R&D to New England by Performer

FY 1998 (obligations in millions of dollars)

Total: \$4.7 billion



Source: National Science Foundation, Federal Funds for Research and Development, Fiscal Years 1998, 1999, and 2000, 2000.

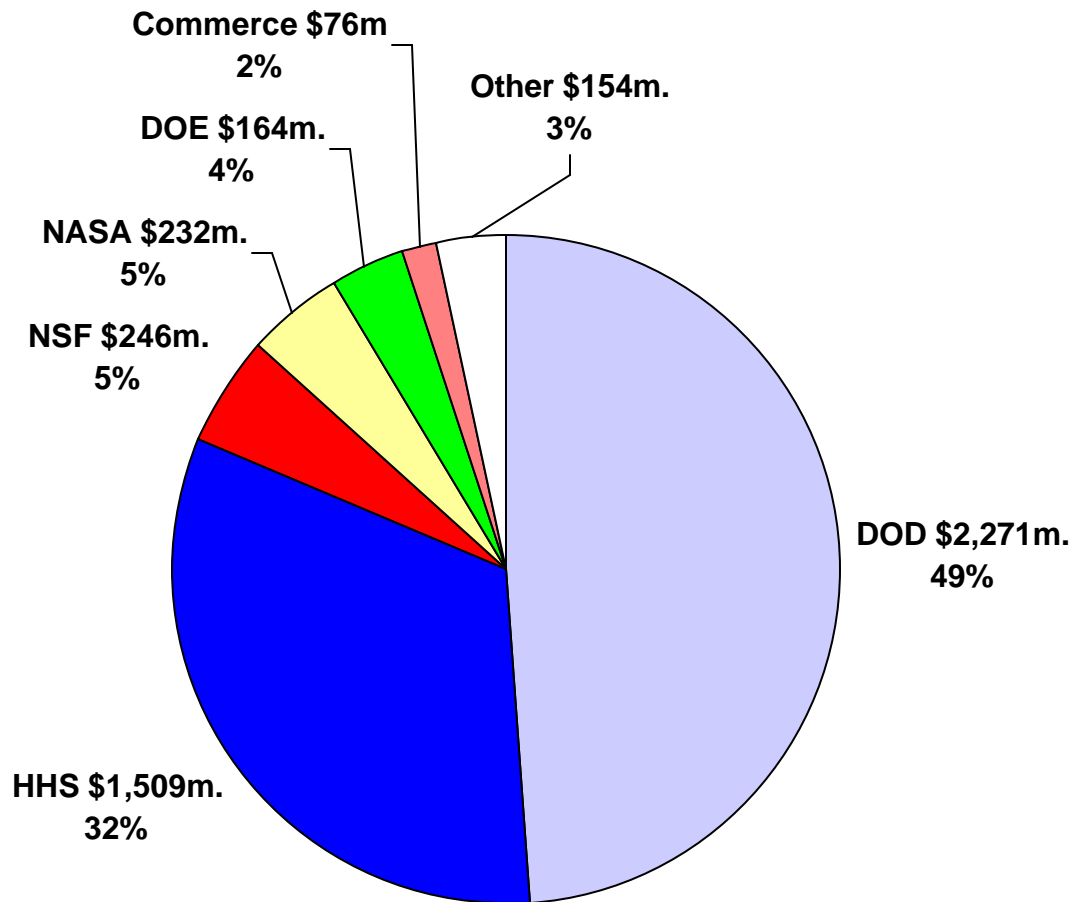
R&D = conduct of R&D and R&D plant.

JULY 2000 © 2000 AAAS



AMERICAN ASSOCIATION FOR THE  
ADVANCEMENT OF SCIENCE

## Federal R&D to New England by Agency FY 1998 (obligations in millions of dollars) Total: \$4.7 billion



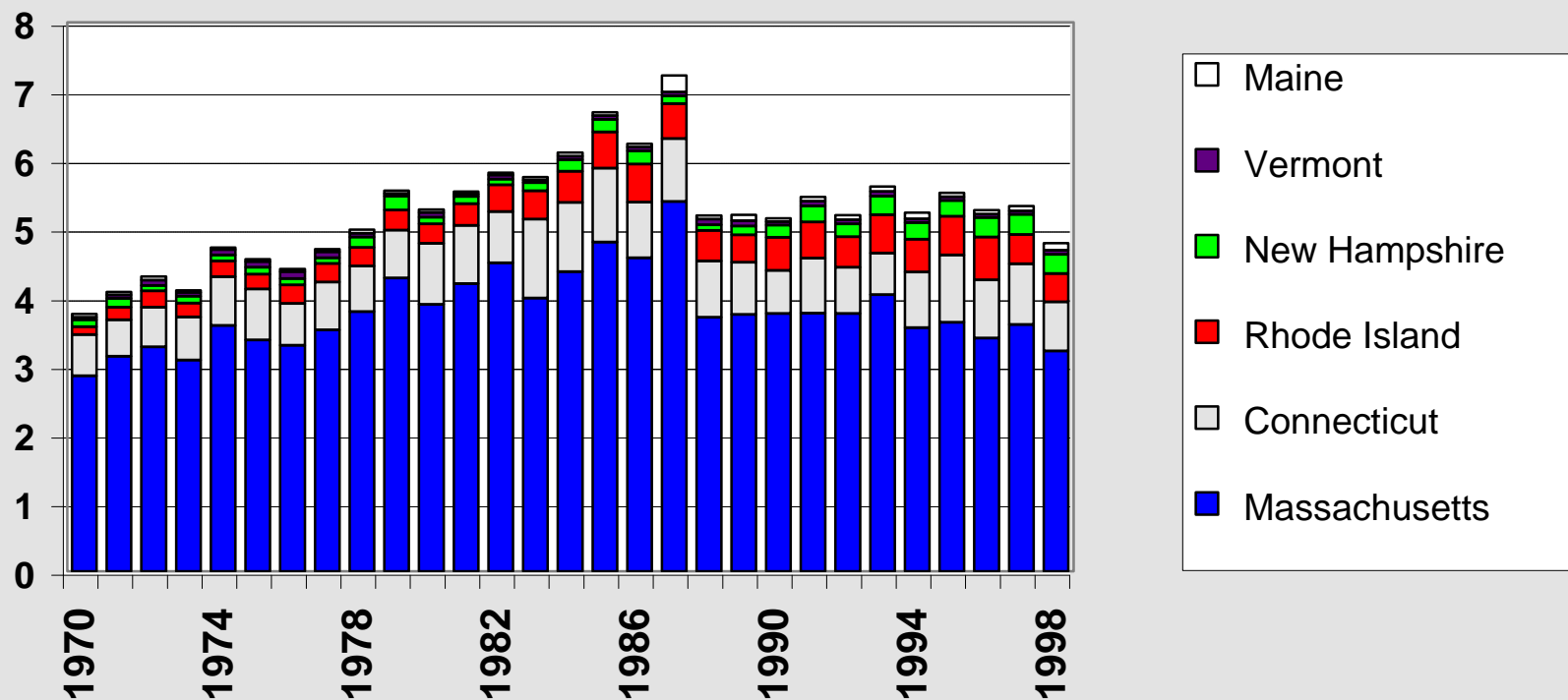
Source: National Science Foundation, *Federal Funds for Research and Development, Fiscal Years 1998, 1999, and 2000, 2000.*

R&D = conduct of R&D and R&D plant.

JULY 2000 © 2000 AAAS

## Federal R&D to New England, FY 1970-1998

(billions of constant FY 2000 dollars)

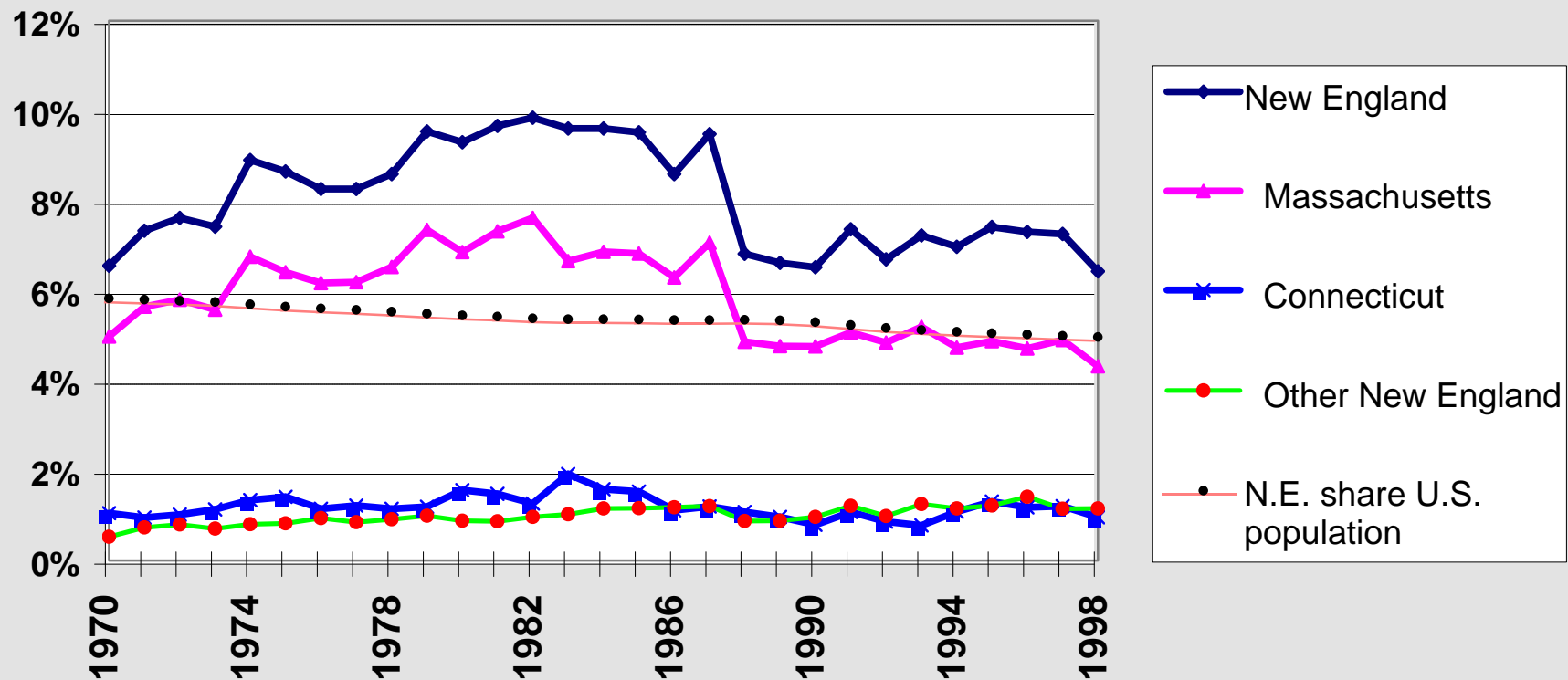


Source: National Science Foundation, Federal Funds for Research and Development Historical Tables.

R&D = conduct of R&D and R&D plant.

JULY 2000 © 2000 AAAS

## New England share of federal R&D, FY 1970-1998 (percent of total federal R&D)

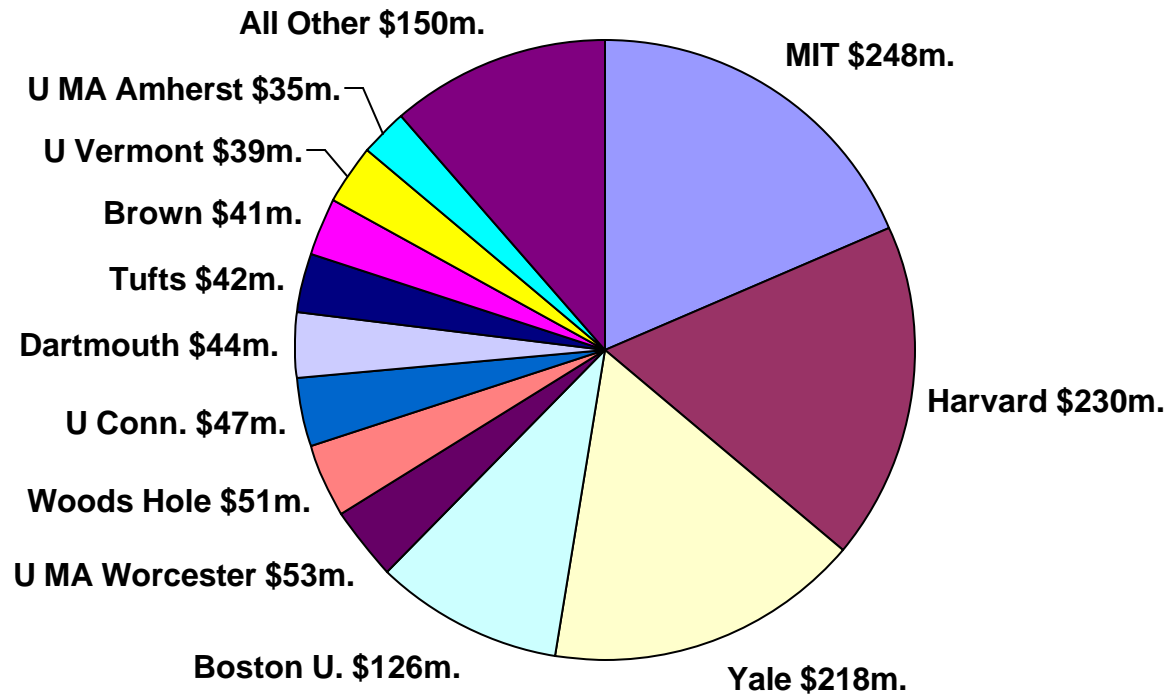


Source: National Science Foundation, Federal Funds for Research and Development Historical Tables.  
R&D = conduct of R&D and R&D plant.  
JULY 2000 © 2000 AAAS

## Federal R&D to New England Colleges and Universities

FY 1998 (obligations in millions of dollars)

Total: \$1.3 billion



Source: National Science Foundation, *Federal Science and Engineering Support to Universities, Colleges, and Nonprofit Institutions, FY 1998, 2000.*

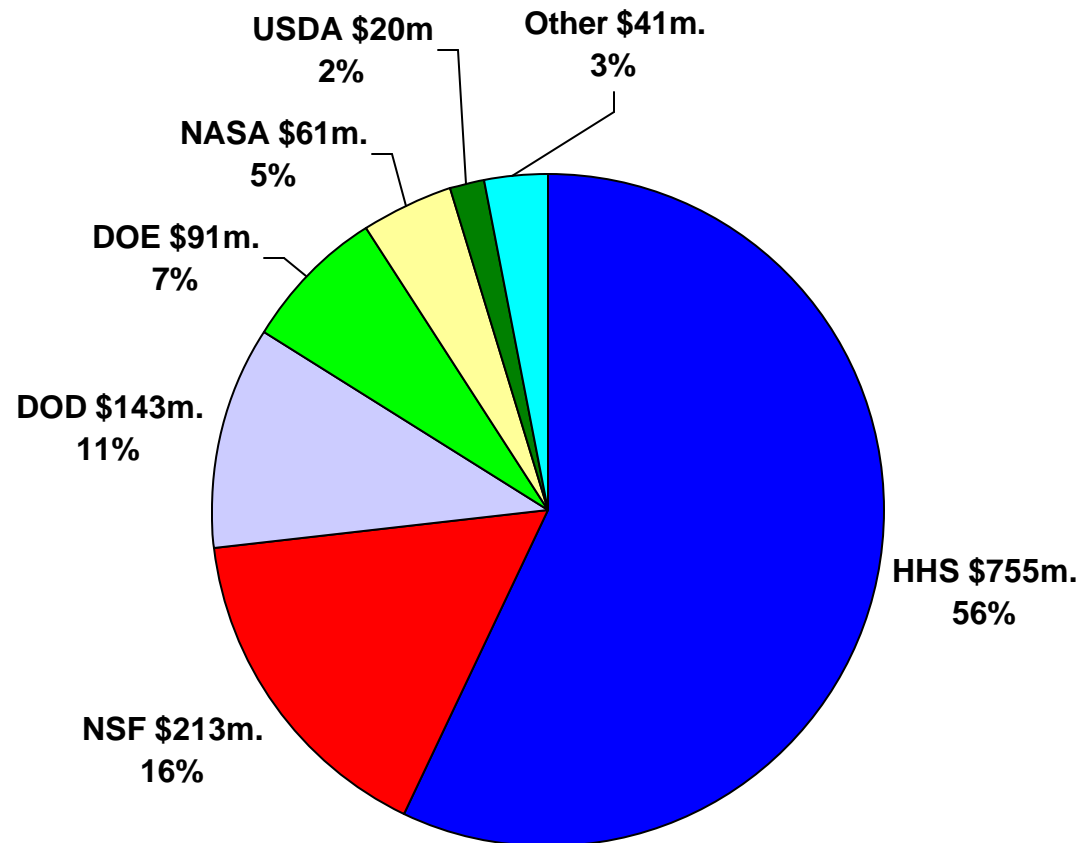
R&D = conduct of R&D and R&D plant.

JULY 2000 © 2000 AAAS

## Federal R&D to New England Colleges and Universities

FY 1998 (obligations in millions of dollars)

Total: \$1.3 billion



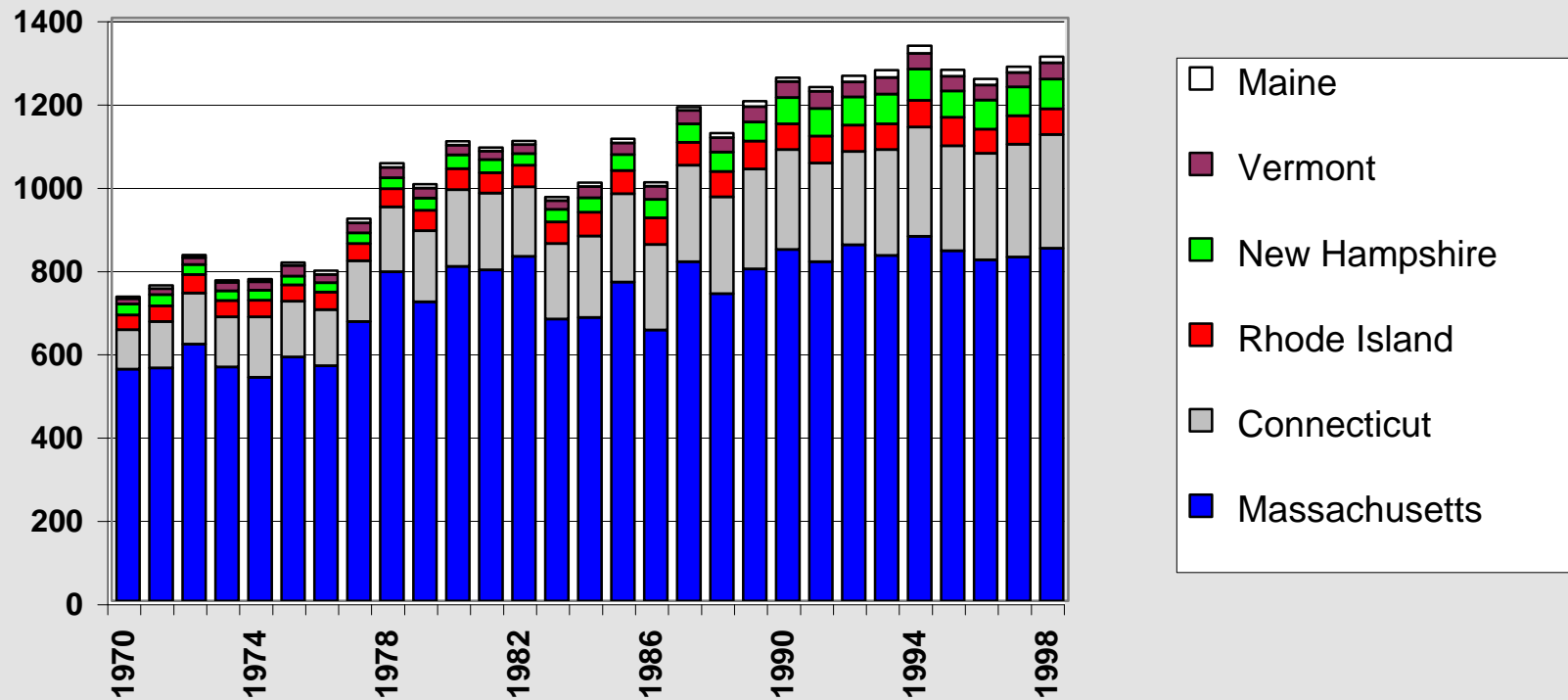
Source: National Science Foundation, *Federal Science and Engineering Support to Universities, Colleges, and Nonprofit Institutions, FY 1998, 2000.*

R&D = conduct of R&D and R&D plant.

JULY 2000 © 2000 AAAS

## Federal R&D to New England Universities and Colleges, FY 1970-1998

(millions of constant FY 2000 dollars)

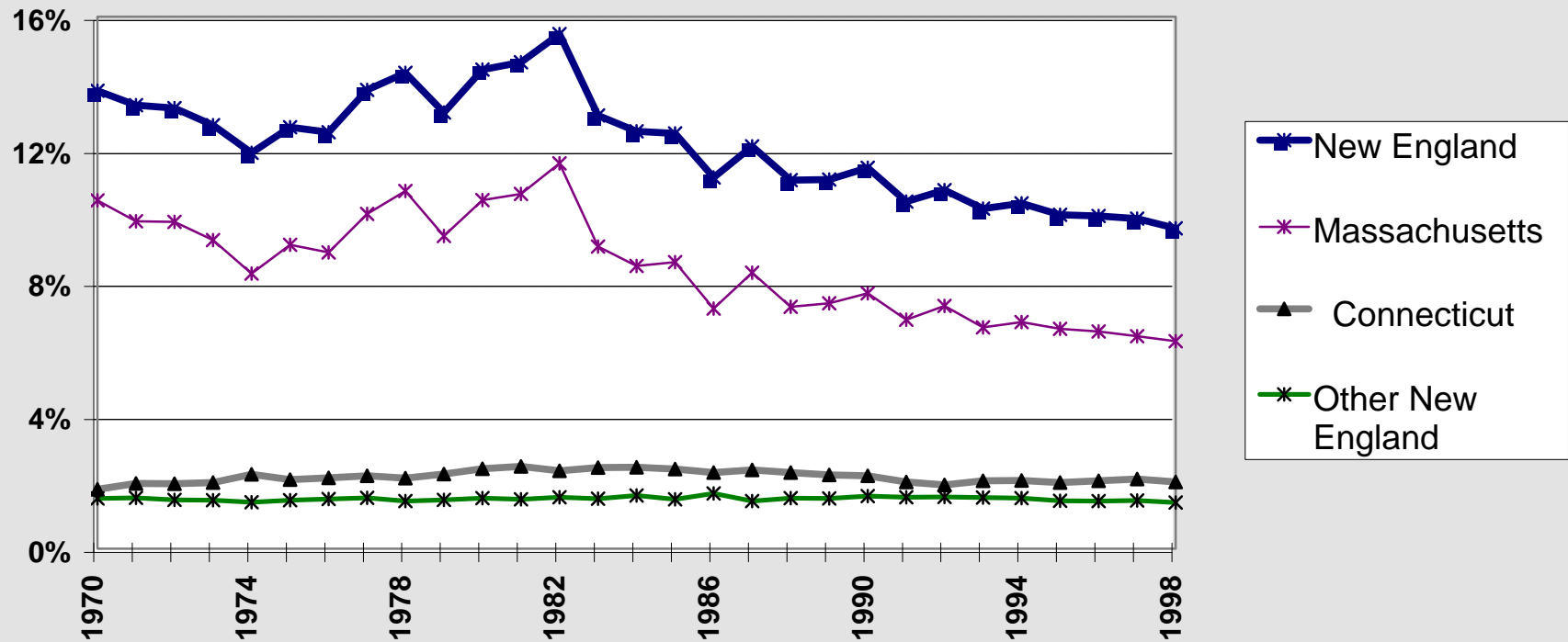


Source: National Science Foundation, Federal Funds for Research and Development Historical Tables.

R&D = conduct of R&D and R&D plant.

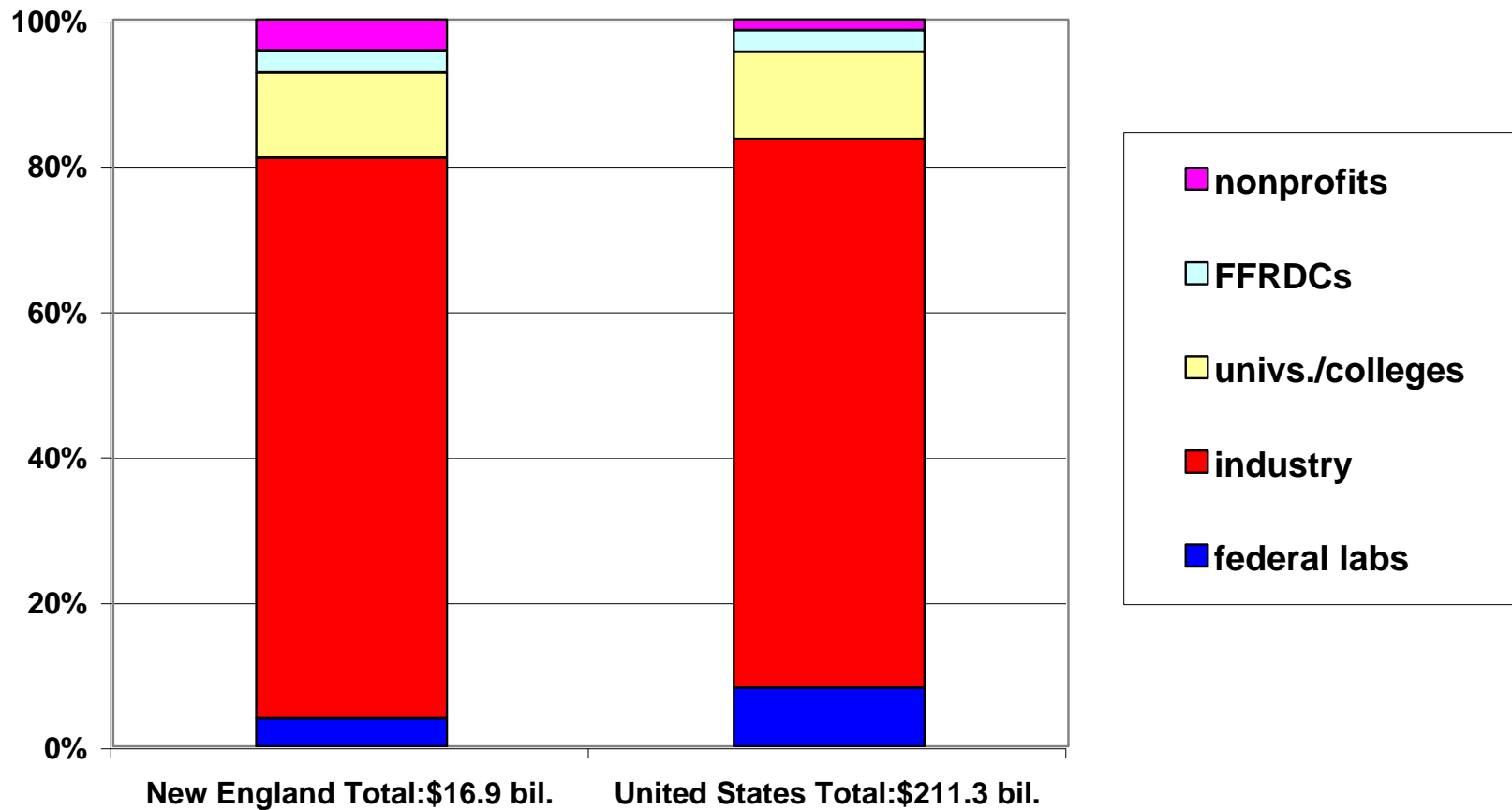
JULY 2000 © 2000 AAAS

## New England Universities and Colleges' Share of Federal Academic R&D, FY 1970-1998 (percent of total federal support of univ/college R&D)



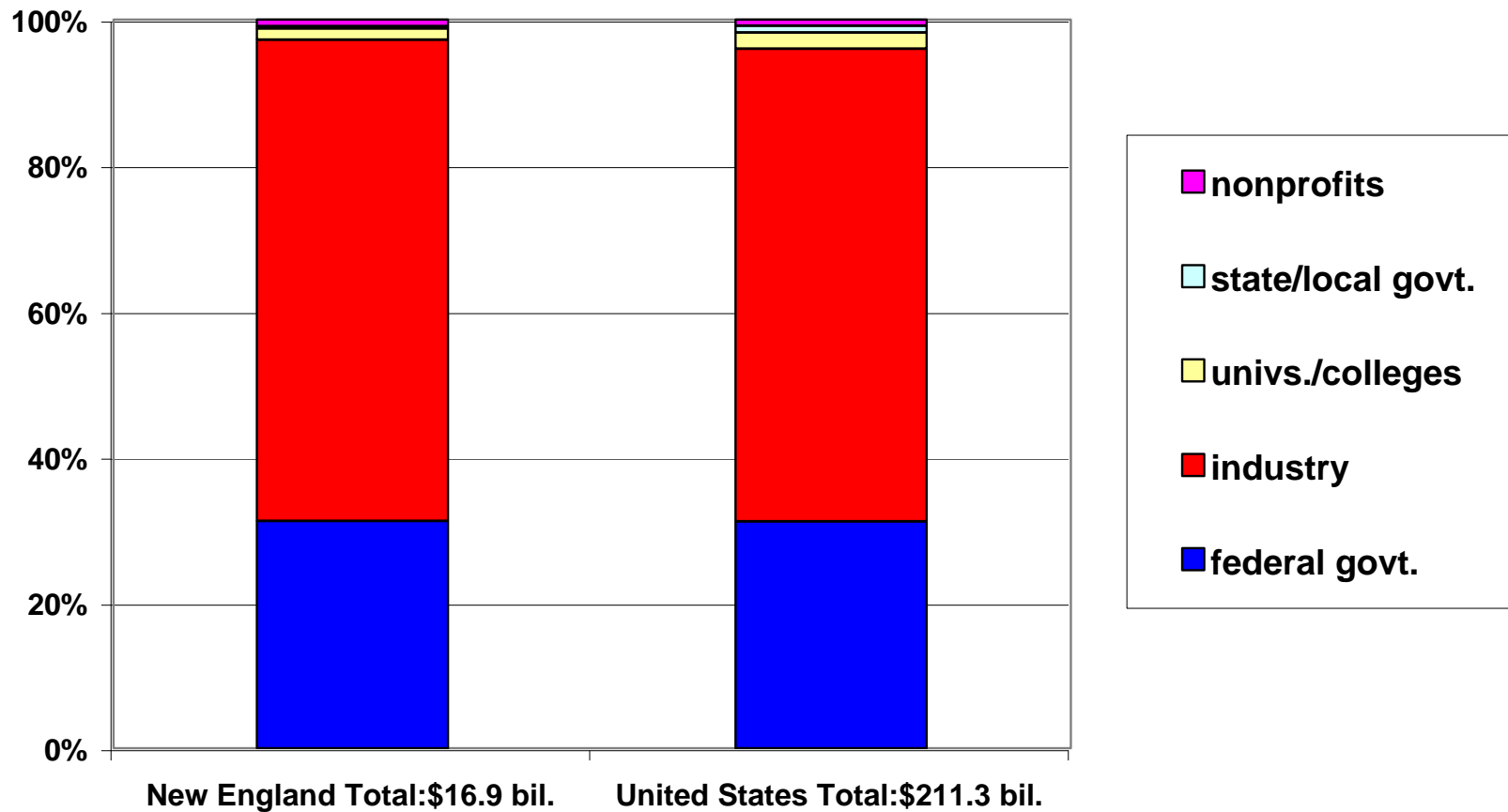
Source: National Science Foundation, Federal Funds for Research and Development Historical Tables.  
R&D = conduct of R&D and R&D plant.  
JULY 2000 © 2000 AAAS

## Total R&D in New England and U.S. by Performer, 1997 (expenditures in billions of dollars)



Source: National Science Foundation, National Patterns of R&D Resources, 1999. conduct of R&D only. JULY 2000 © 2000 AAAS

## Total R&D in New England and U.S. by Source of Funds, 1997 (expenditures in billions of dollars)



Source: National Science Foundation, National Patterns of R&D Resources, 1999. conduct of R&D only. JULY 2000 © 2000 AAAS