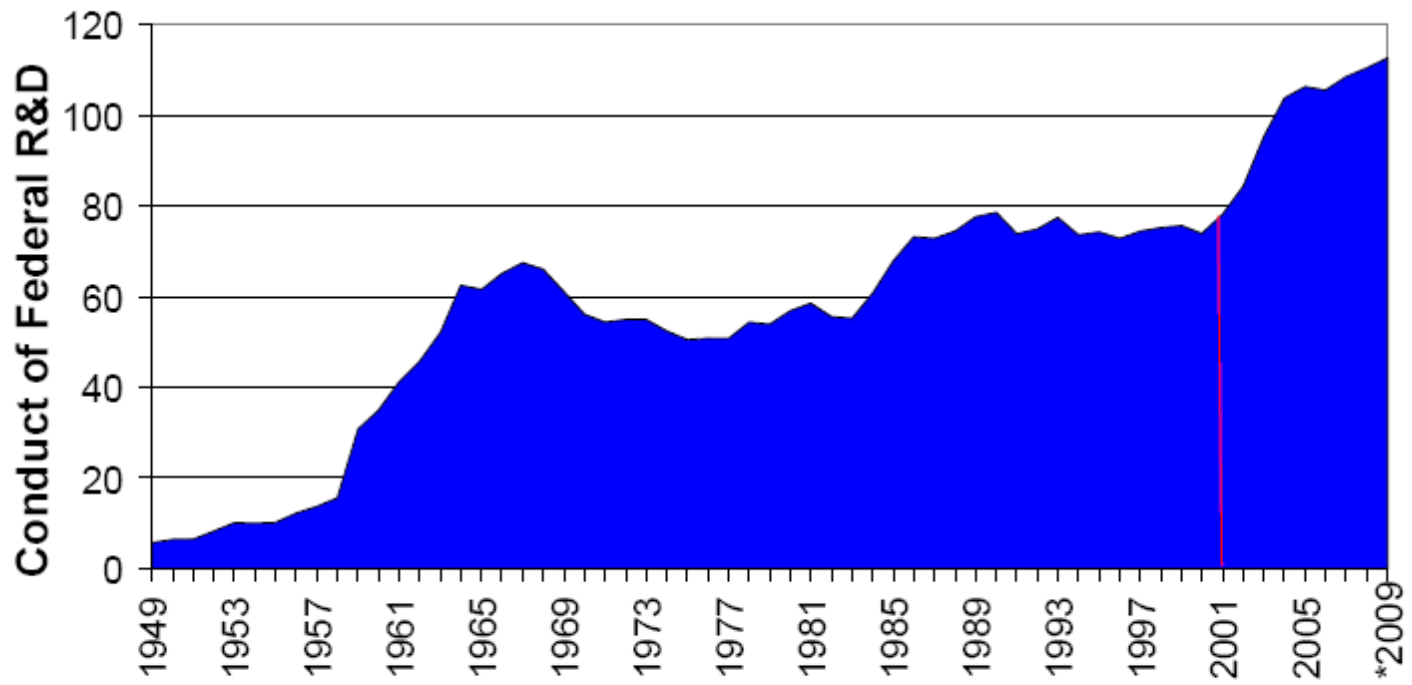
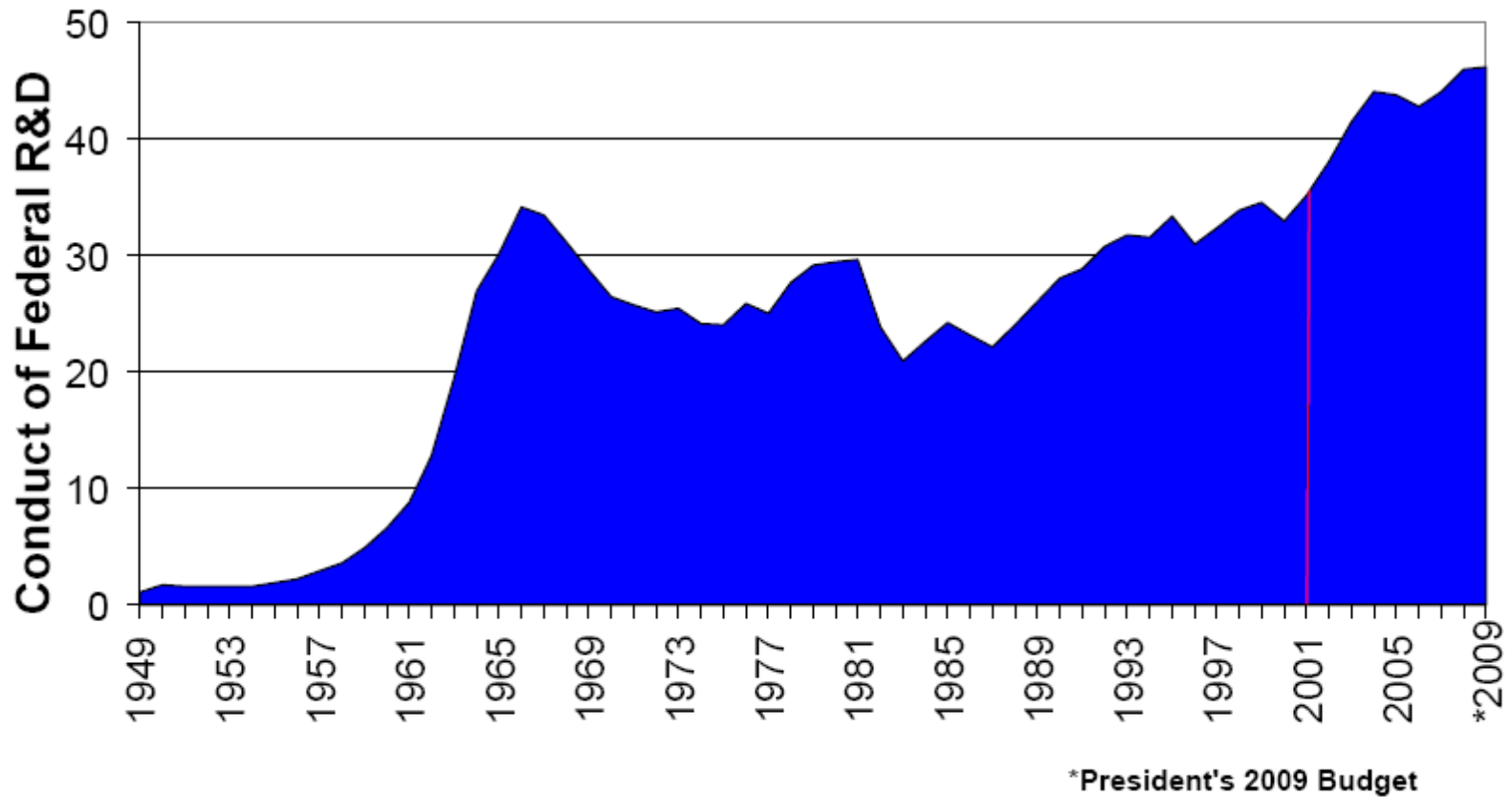


## Federal R&D Spending (Outlays in billions, constant 2000 dollars)



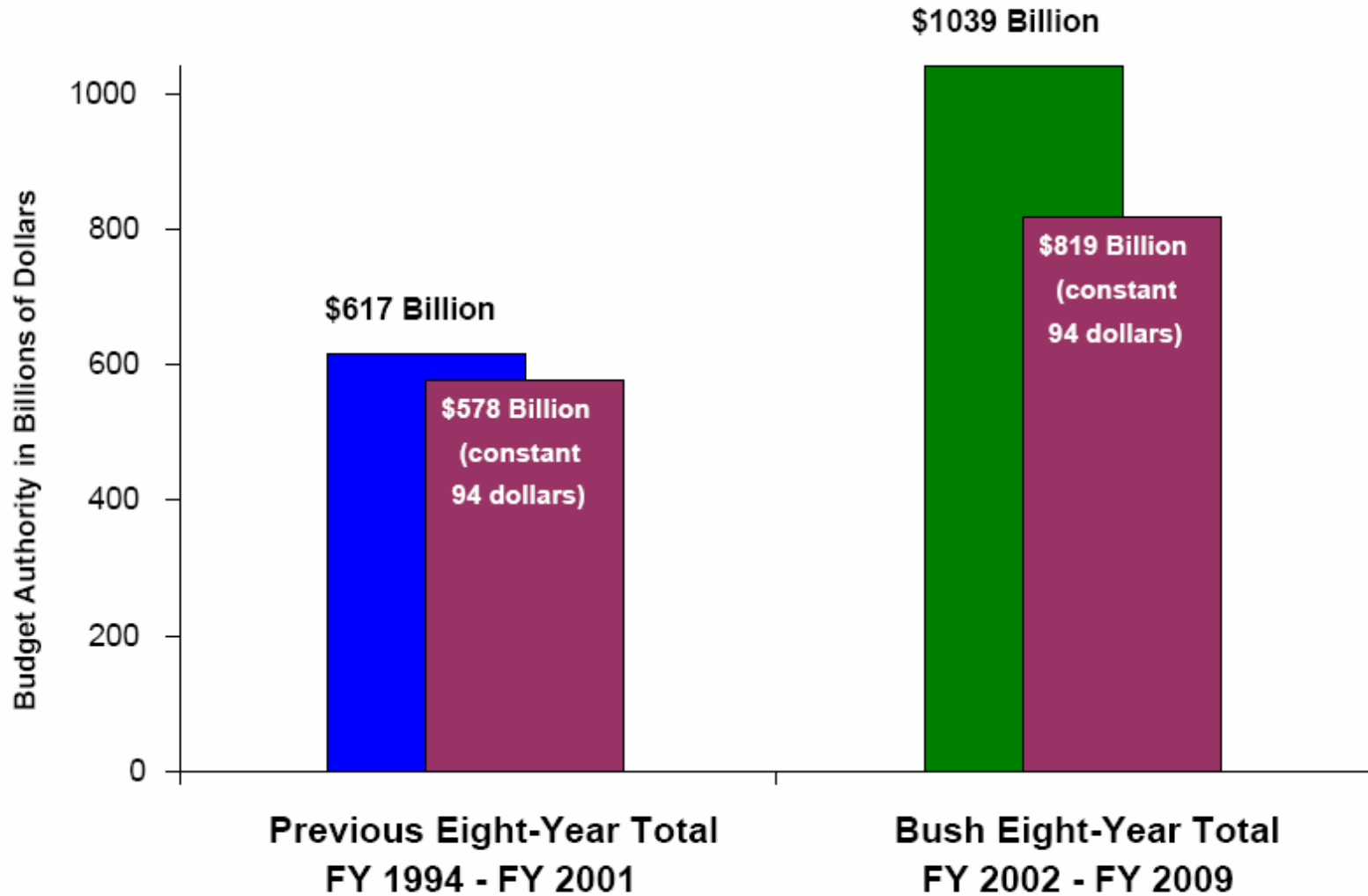
\*President's 2009 Budget

## Federal Non-Defense R&D Spending (Outlays in billions, constant 2000 dollars)



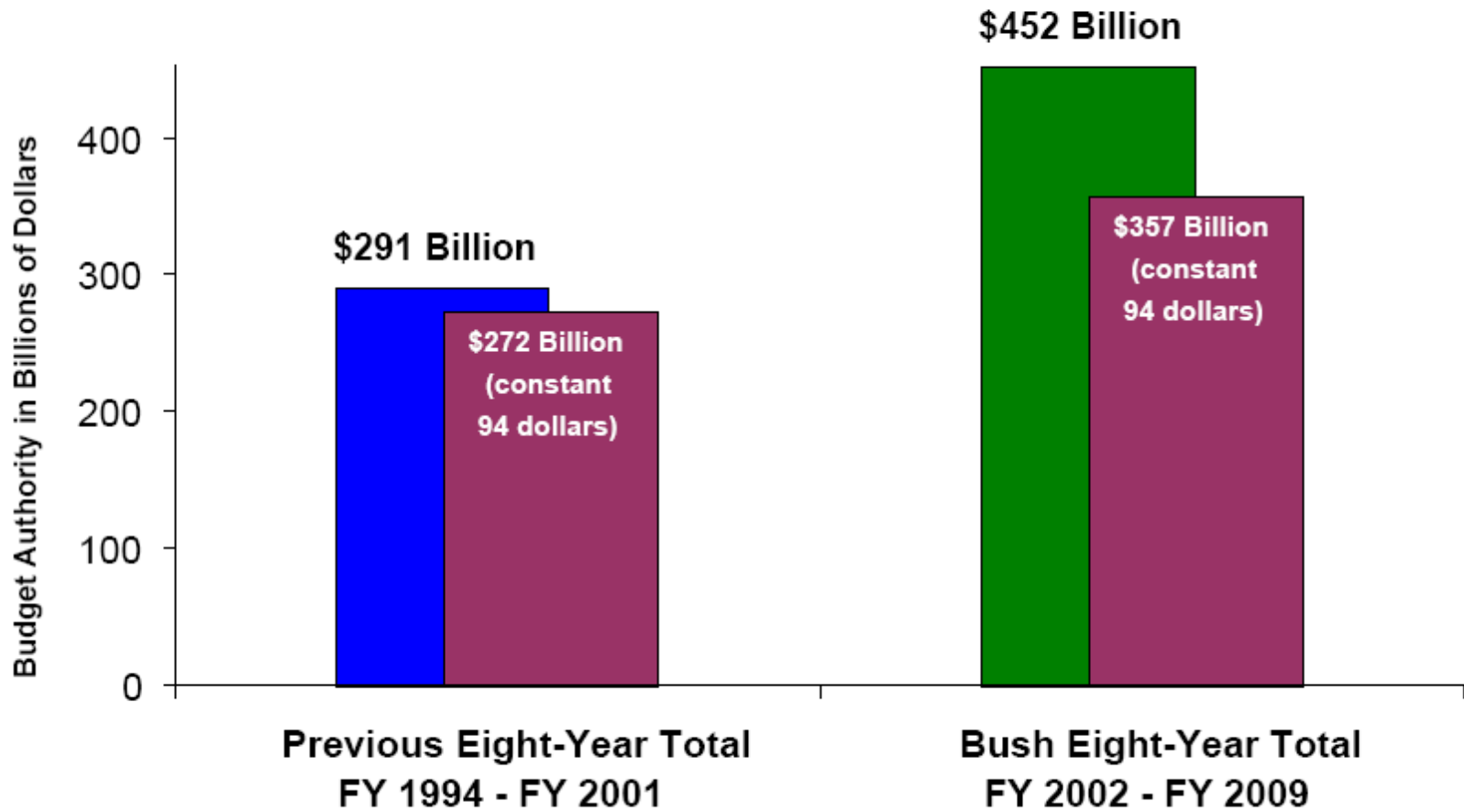
# Federal Research and Development

*42% More Real Investment*



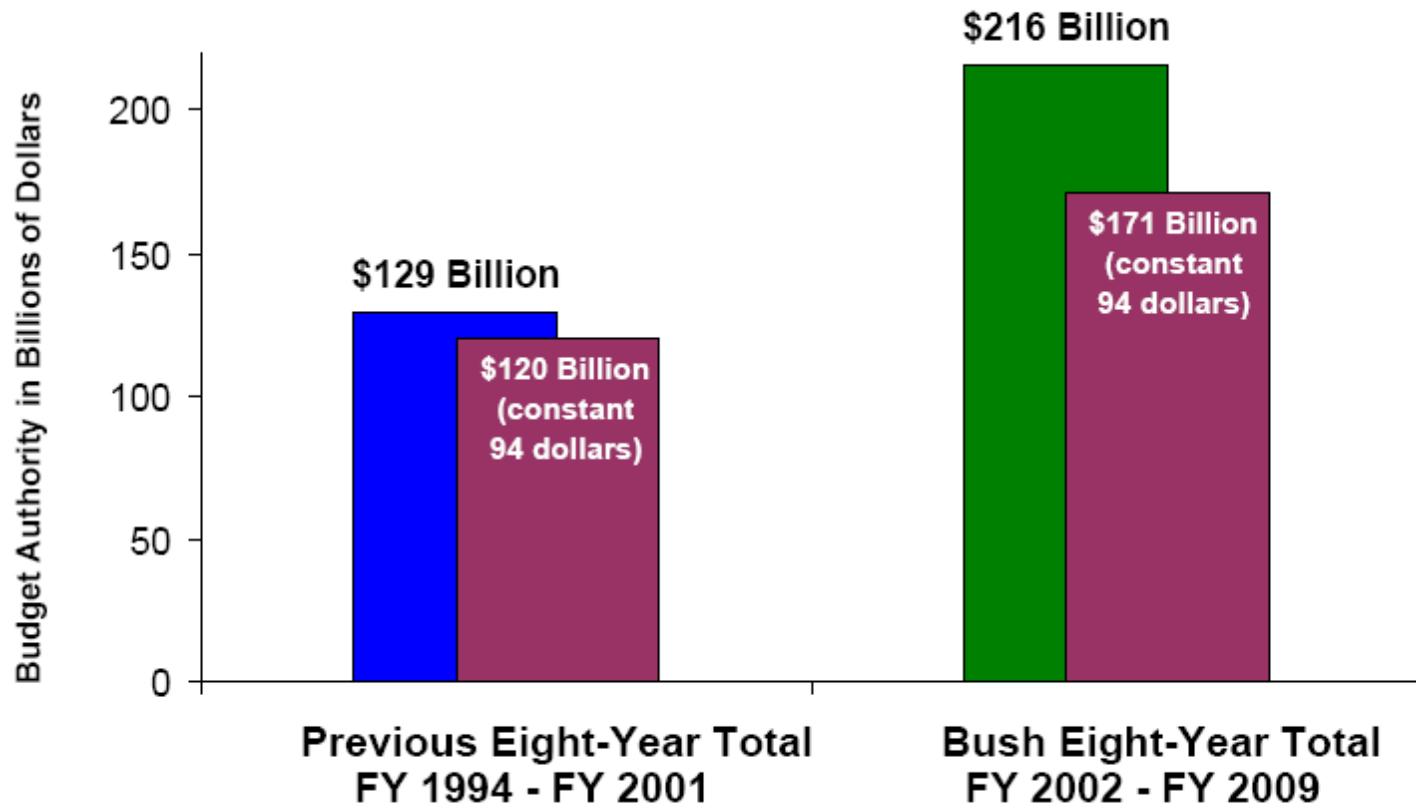
# Civilian Research and Development

*31% More Real Investment*



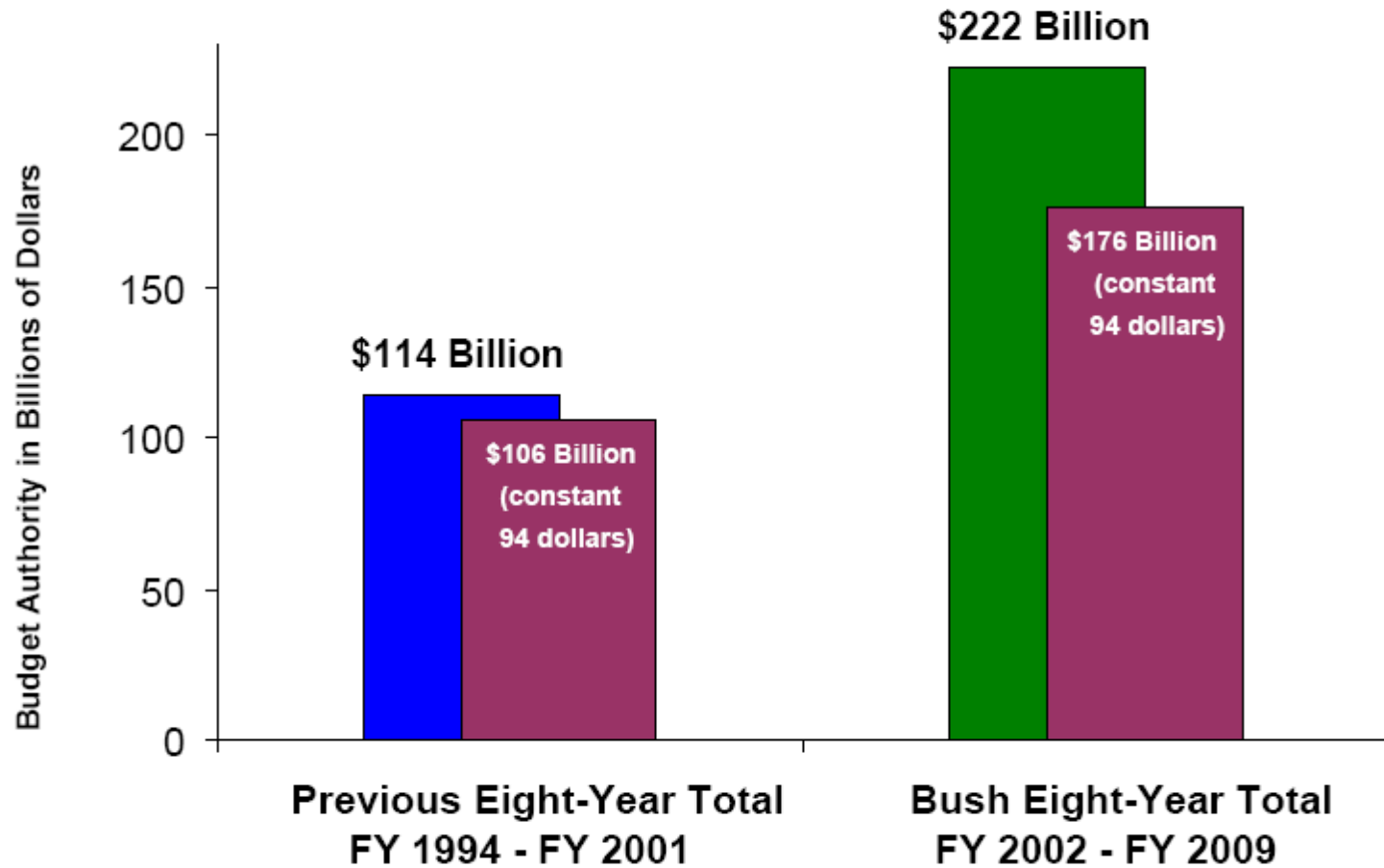
# Basic Research

*42% More Real Investment*



# National Institutes of Health

*66% More Real Investment*



# National Science Foundation

*36% More Real Investment*

